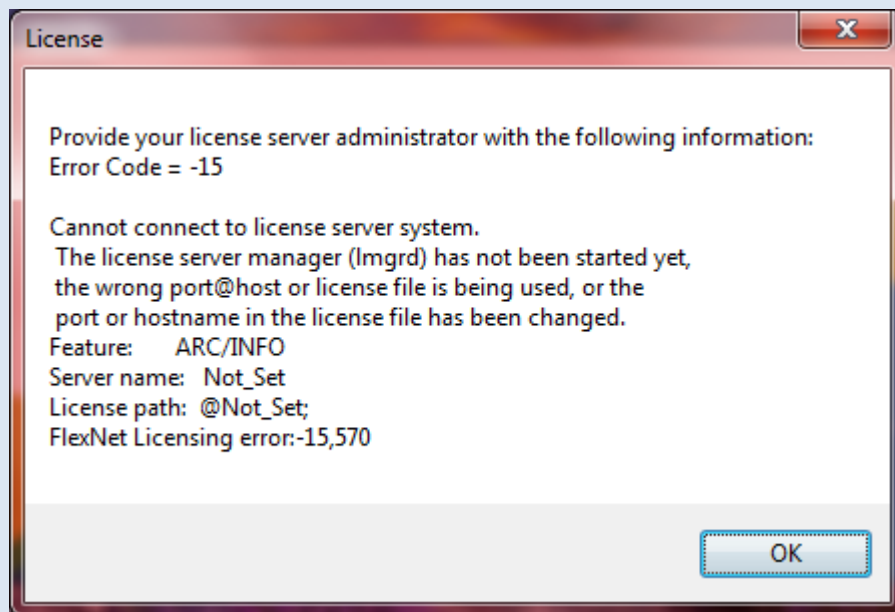
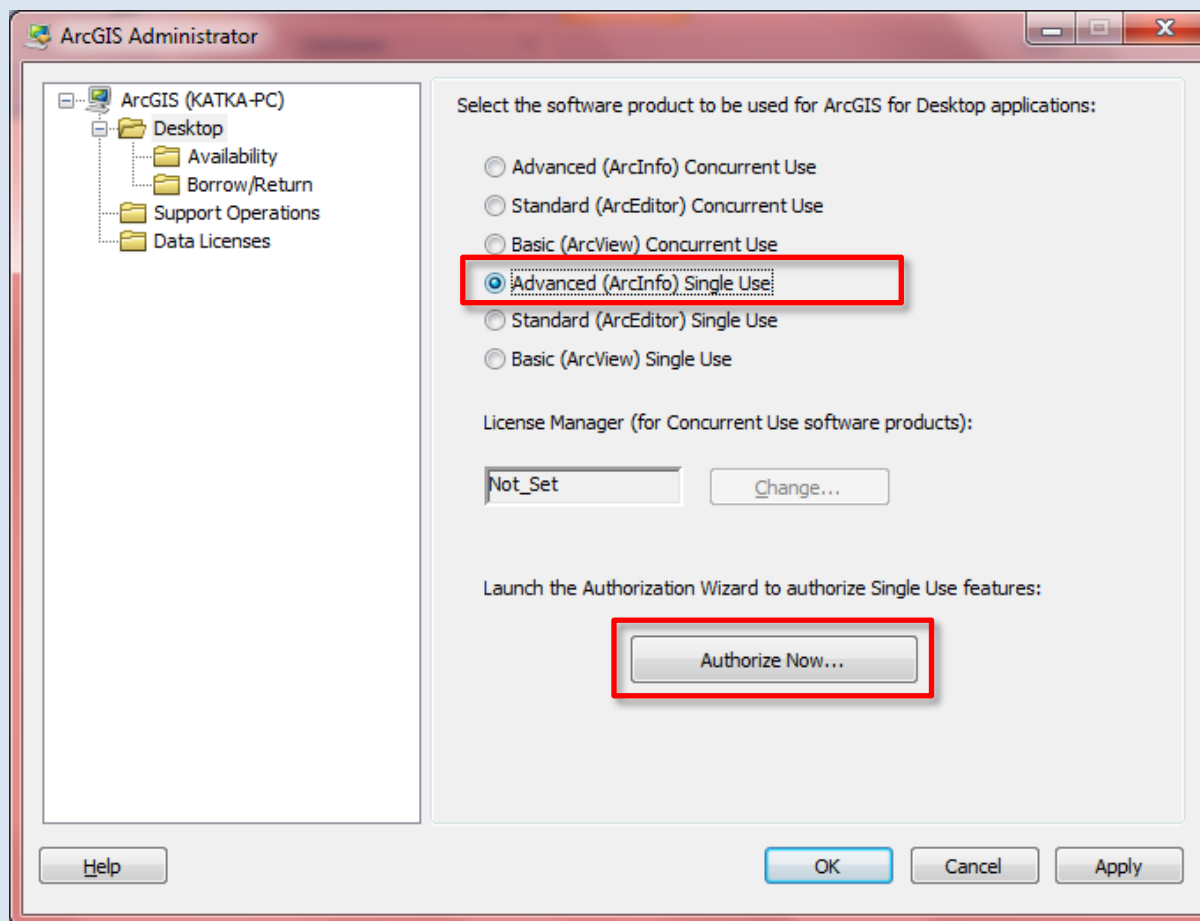


Postup autorizace ArcGIS for Desktop - student

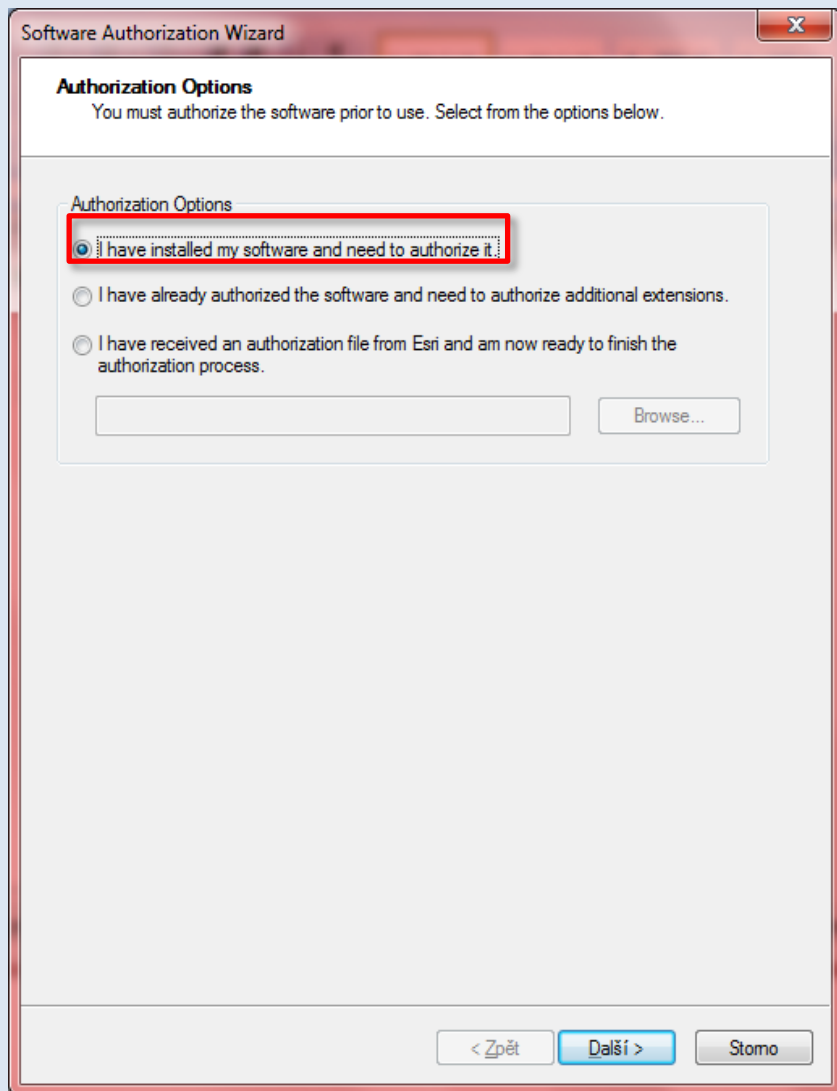
Pokud se při spuštění ArcMap či ArcCatalogu zobrazí následující hláška (nebo podobná říkající, že nemáte licenci), je nutné software autorizovat.



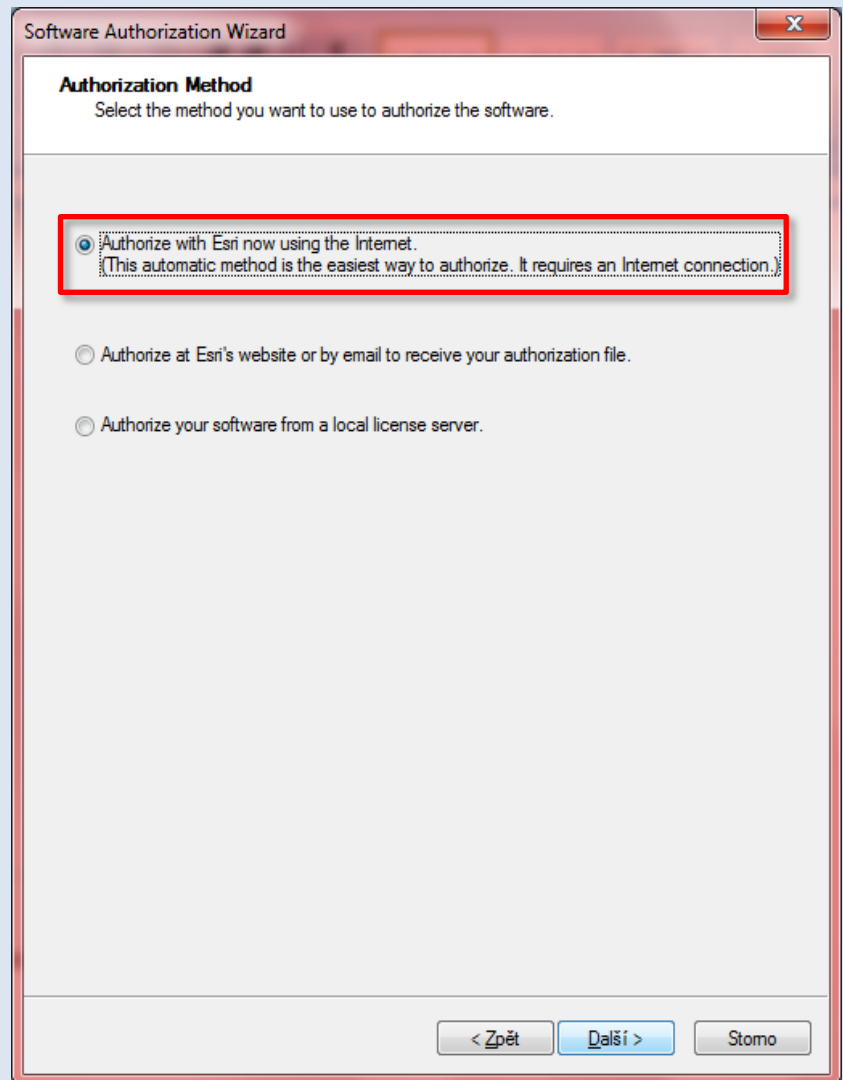
Autorizaci a nastavení licence provedete pomocí ArcGIS Administrator (Start – ArcGIS – ArcGIS Administrator).



Zvolte *Advanced (ArcInfo) Single Use* a poté *Authorize Now...*



V dalším dilaogu vyberte možnost *I have installed my software and need to authorize it* a poté *Authorize with Esri now using the Internet*.



Software Authorization Wizard

Authorization Information
We will use the following information to verify our records and authorize your use of the software. (* required field)

*First Name:

*Last Name:

*Organization:

Department:

*Address 1:

Address 2:

*City:

*State/Province:

*Zip/Postal Code:

*Location:

*Phone Number:

*Email:

Comment:
Optional user-defined authorization description.

< Zpět Další > Stomo

Vyplňte informace o sobě (stejně jste zadávali při vytváření Global Esri account) a info o organizaci a vás

Software Authorization Wizard

Authorization information (continued)
We will use the following information to verify our records and authorize your use of the software. (* required field)

*Your Organization:

*Your Industry:

*Yourself:

The personal information you supplied is protected under Esri's privacy policy. If you want to view Esri's privacy policy, click the View button below.

View...

< Zpět Další > Stomo

Zadejte autorizační kód, který jste použili pro stažení software (EVAxxxxxxxxx)

The image shows a Windows-style dialog box titled "Software Authorization Wizard". The main heading is "Software Authorization Number" with the instruction "Enter the authorization number for your software product". Below this, a note states: "The authorization number consists of three letters and a series of numbers; similar to ABC123456789." The software being authorized is identified as "ArcGIS for Desktop Advanced (Single Use)". A text input field contains the characters "EVA". At the bottom of the dialog, there are three buttons: "< Zpět" (Back), "Další >" (Next), and "Storno" (Cancel).

Software Authorization Wizard

Software Authorization Number
Enter the authorization number for your software product

The authorization number consists of three letters and a series of numbers; similar to ABC123456789.

ArcGIS for Desktop Advanced (Single Use)

EVA

< Zpět Další > Storno

Extenze jsou součástí licence, není potřeba je autorizovat zvlášť, ale povolte si přístup k nim.

Software Authorization Wizard

Authorize Software Extensions

Please select an option below.

Options

I do not want to authorize any extensions at this time.

I have authorization number(s) to authorize one or more extensions.

Extensions

Feature	Authorization Number
3D Analyst	
Spatial Analyst	
Network Analyst	
Publisher	
Data Interoperability	
Geostatistical Analyst	
Tracking Analyst	
Schematics	
Full Motion Video	
Workflow Manager	
Data Reviewer	

Software Authorization

Evaluate Software Extensions

You have not provided authorization information for one or more of the ArcGIS for Desktop extensions. If you would like to try an evaluation copy of an extension listed below, select the desired extension and add it to the evaluation list.

Available Extensions

Evaluation Extensions

- 3D Analyst
- Data Interoperability
- Data Reviewer
- Full Motion Video
- Geostatistical Analyst
- Network Analyst
- Publisher
- Schematics
- Spatial Analyst
- Tracking Analyst
- Workflow Manager

Note: If you have previously authorized any of these extensions, Esri cannot provide you additional evaluations.

< Zpět Další > Storno

< Zpět Další > Storno

V dalším kroku se licence nechá autorizovat a po úspěšné autorizaci můžete program používat.

