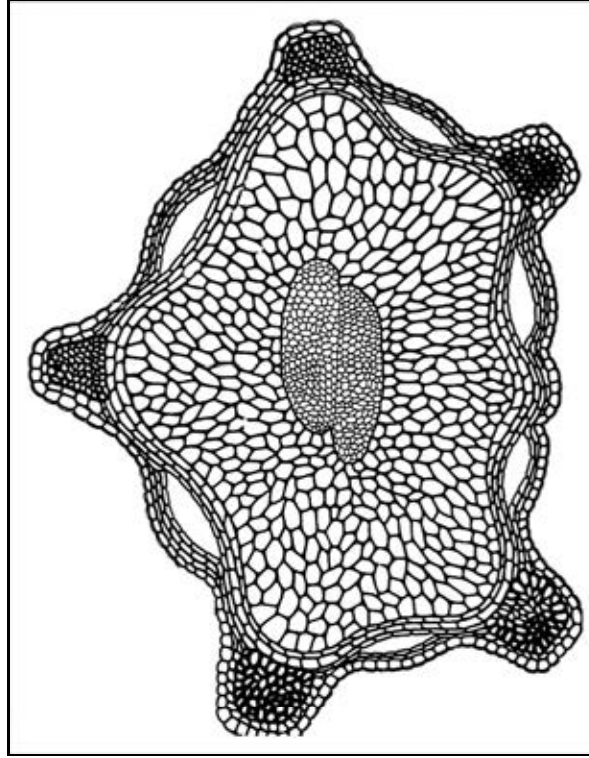
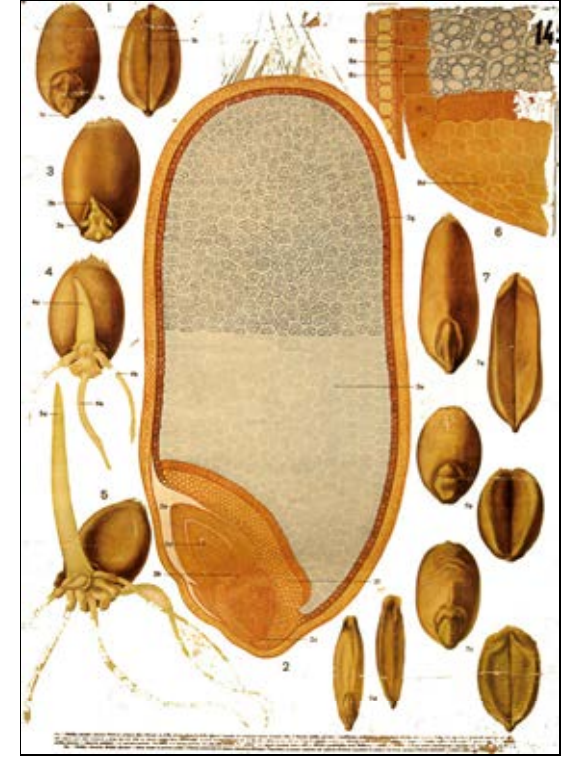




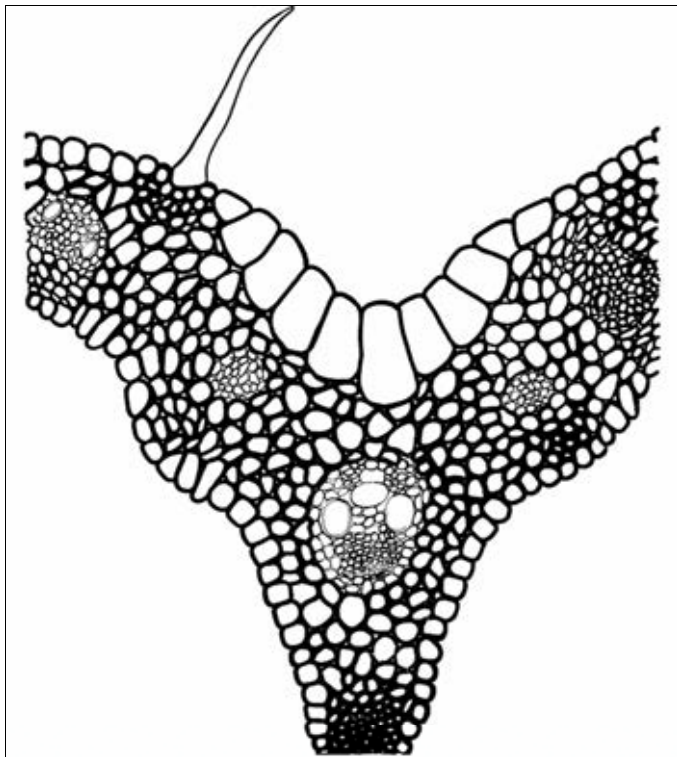
Obilka



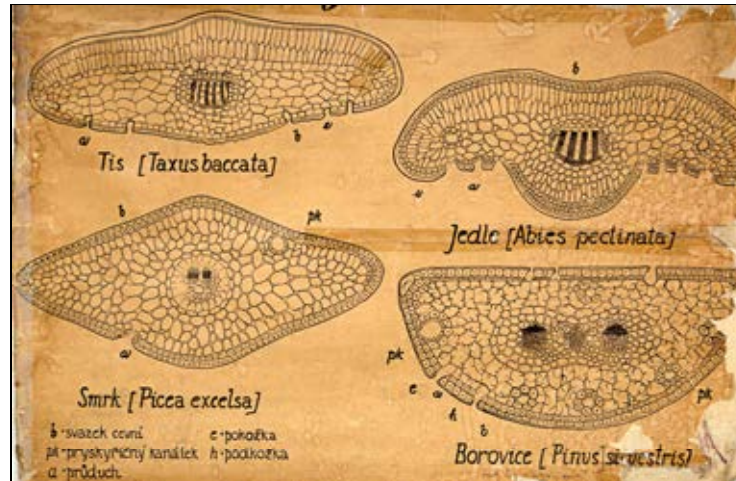
201 O - Kmín - průřez nažkou



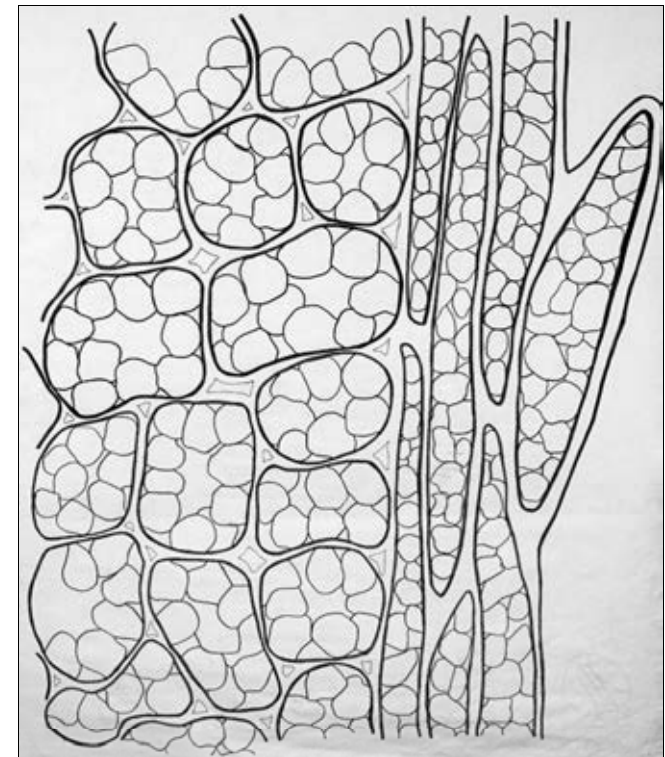
202 O - Obilka pšenice - stavba



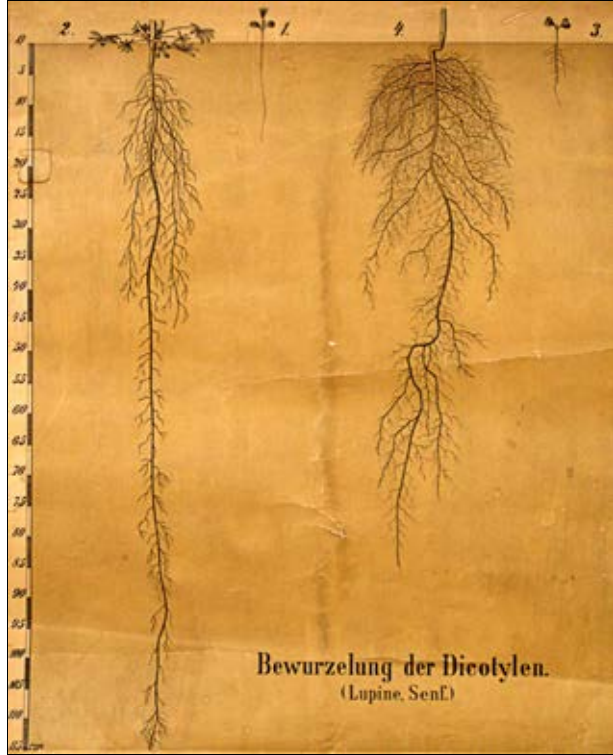
203 O - Srha - průřez listem



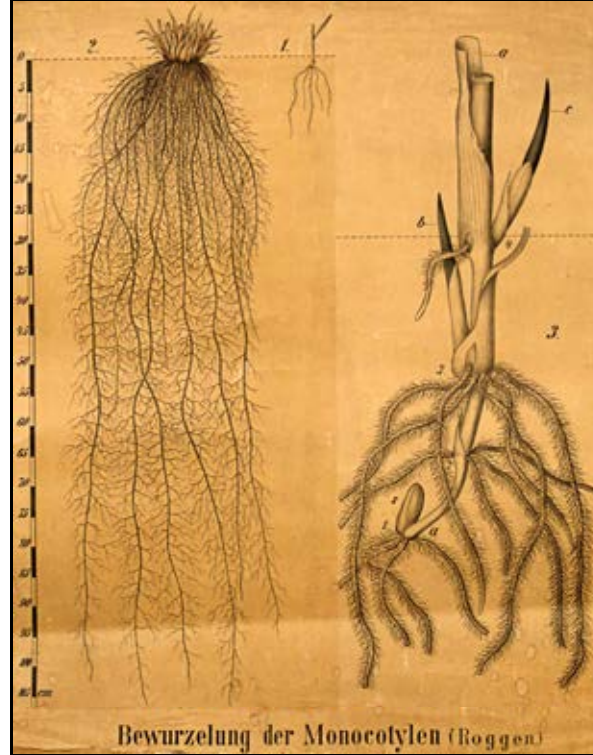
204 O - Jehlice - průřezy



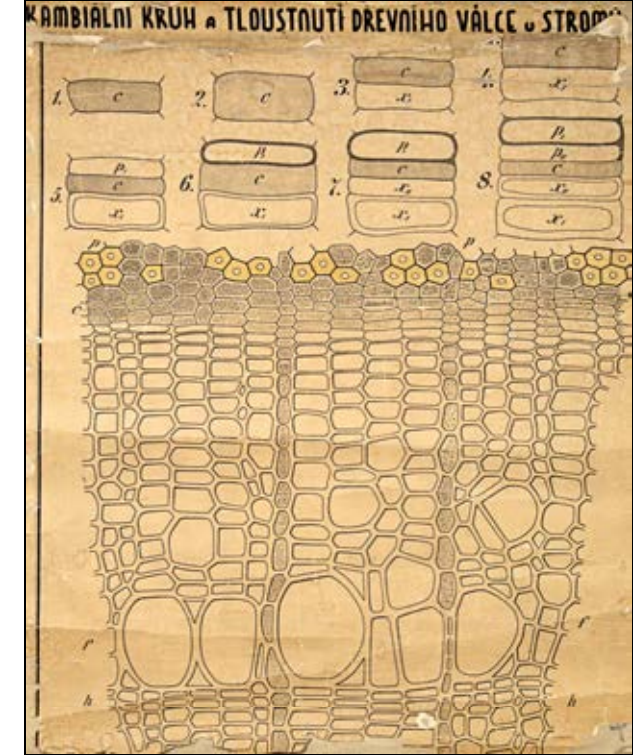
205 O - Měřik - okraj fyloidu



206 O - Kořenové soustavy - dvouděložné



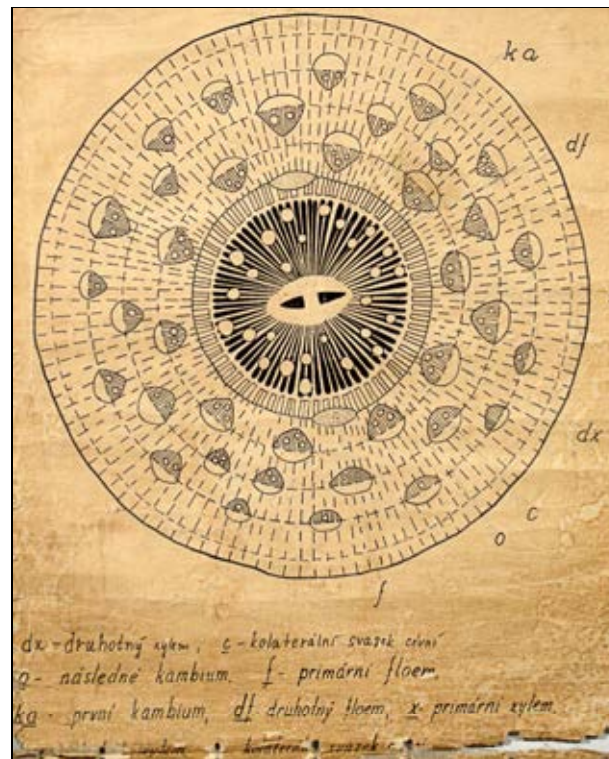
207 O - Kořenové soustavy - jednoděložné



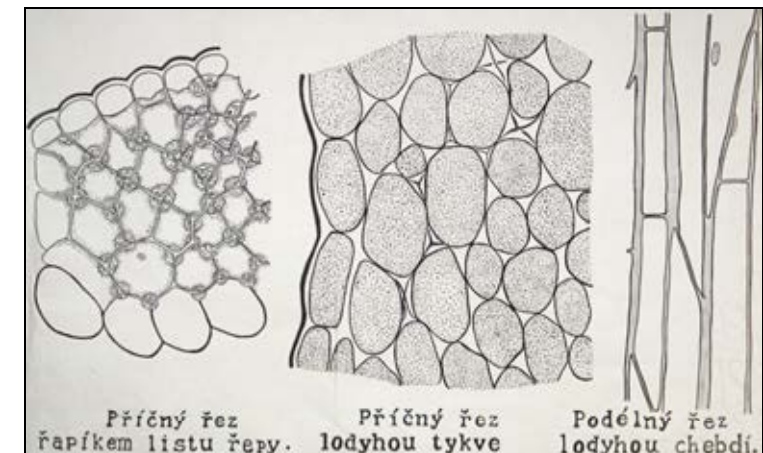
208 O - Sekundární tloušťnutí u stromů



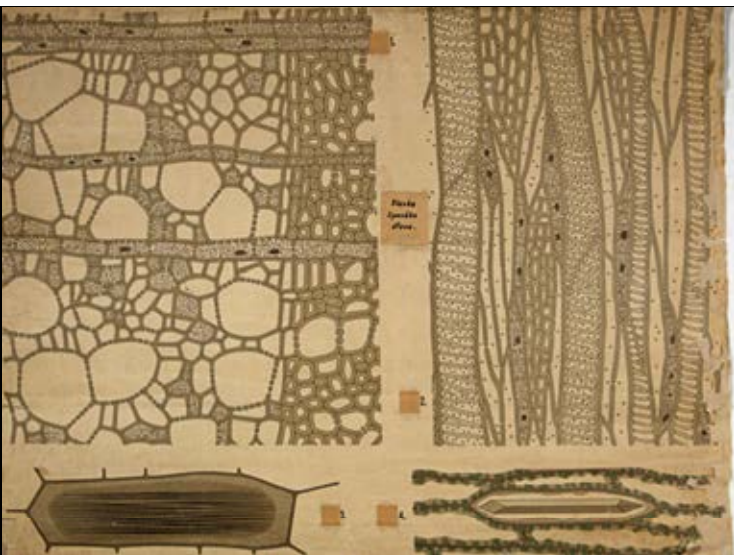
209 O - Kořenové vlášení



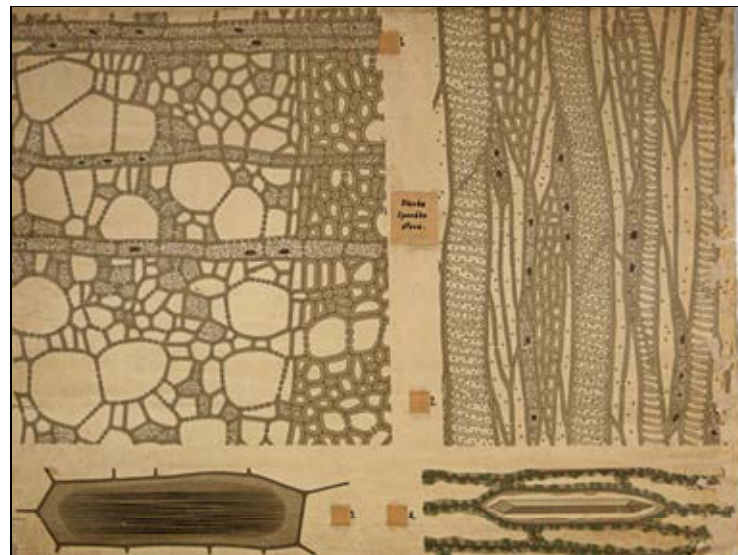
210 O - Kořen řepy



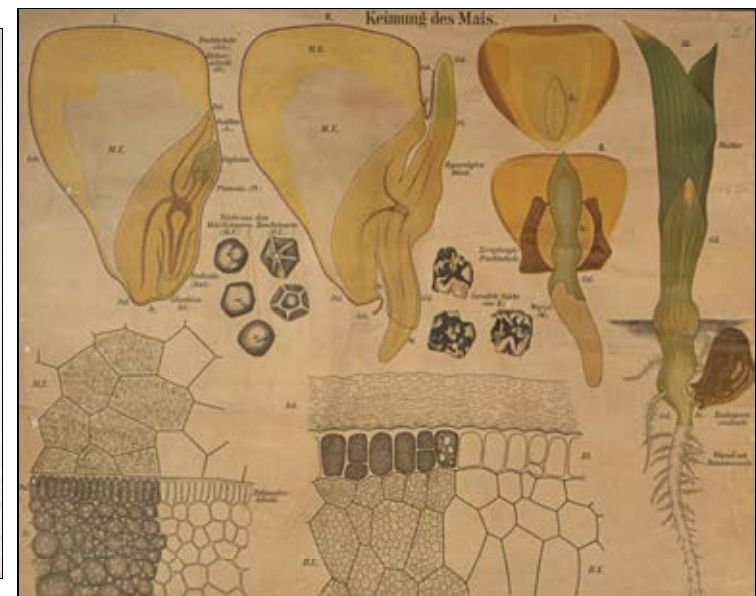
211 O - kolenchymatická pletiva



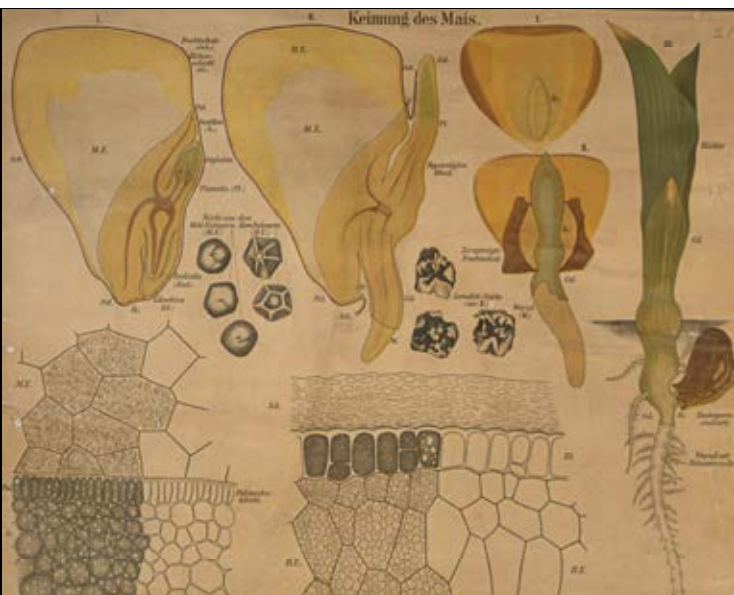
212 O - dřevo - stavba Tilia



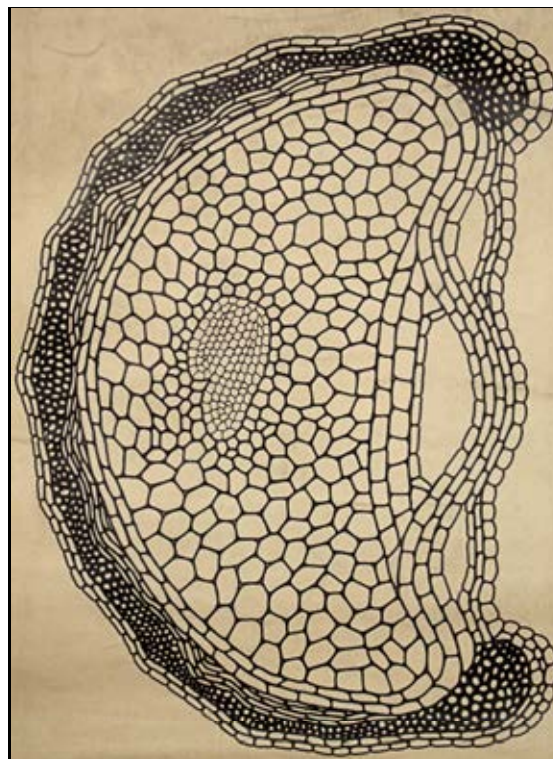
212 O - stavba lipového dřeva



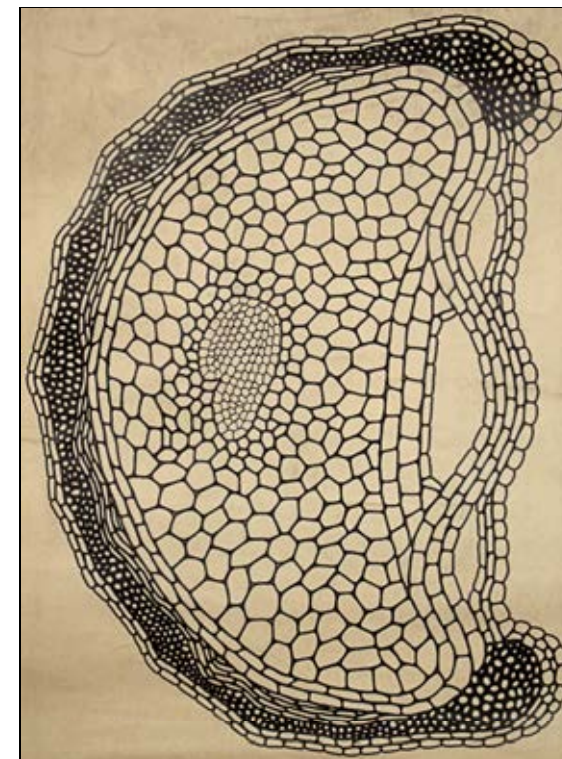
213 O - embryo a semena kukuřice



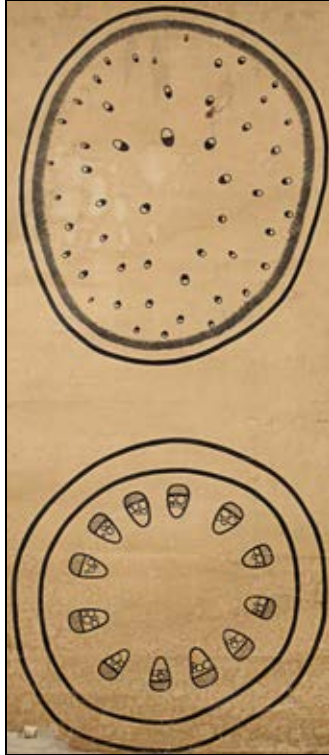
213 O - embryo a semena Zea mays



214 O - nažka - řez Coriandrum



214 O - řez nažkou koriandru



215 O - ataktostéle a eustéle



216 O - prim a sek stavba stonku dvouděložných



216 O - stoněk - prim a sek stavba Dicotyledones



217 O - kořen - typy



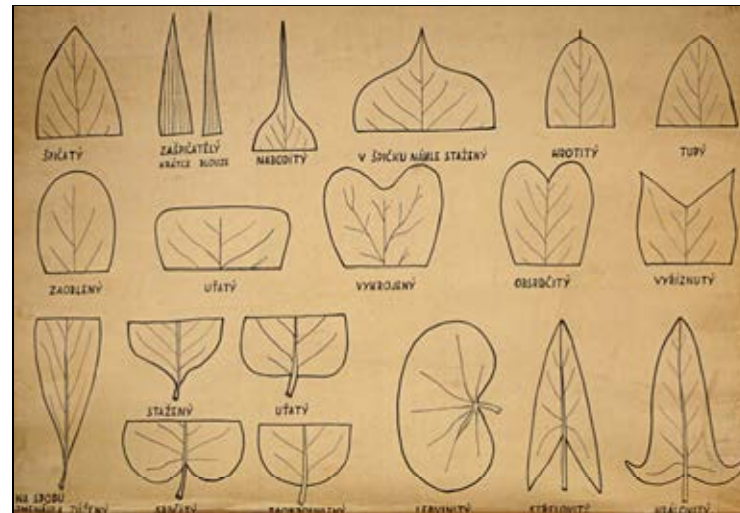
217 O - typy kořenů rostlin



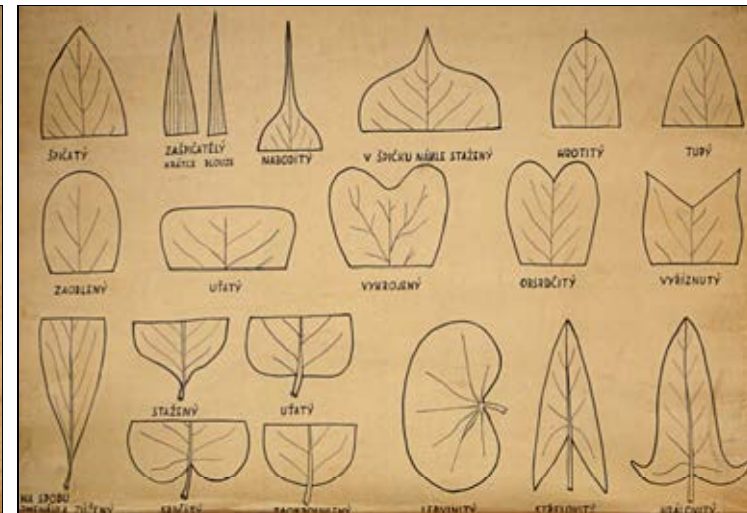
218 O - heterofylie Campanula rotundifolia



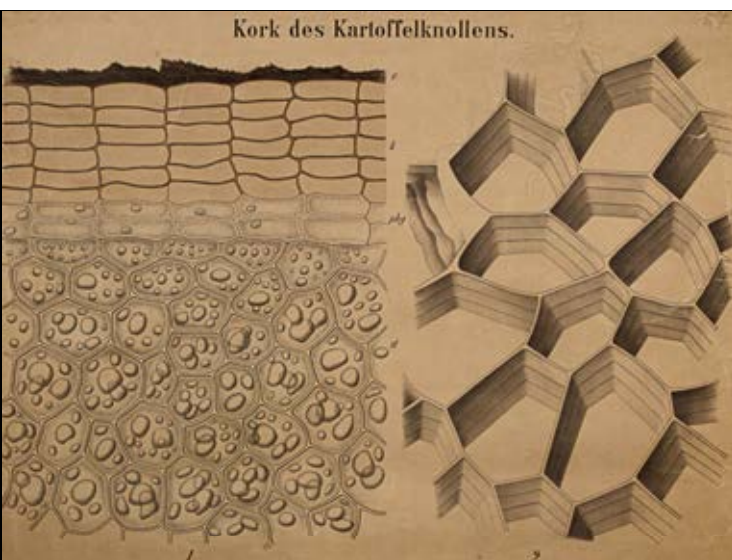
219 O - heterofylie Sagittaria sagittifolia



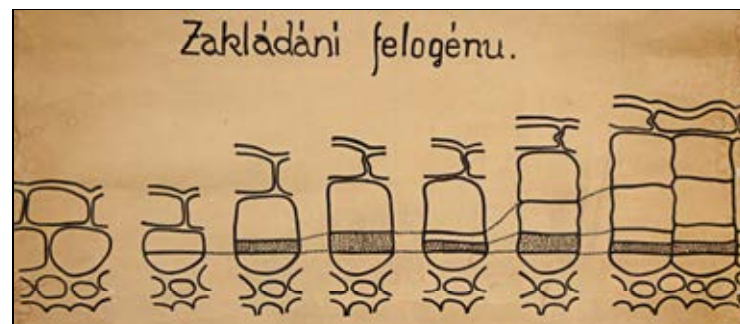
220 O - list - tvary jednoduchých



220 O - tvary jednoduchých listů



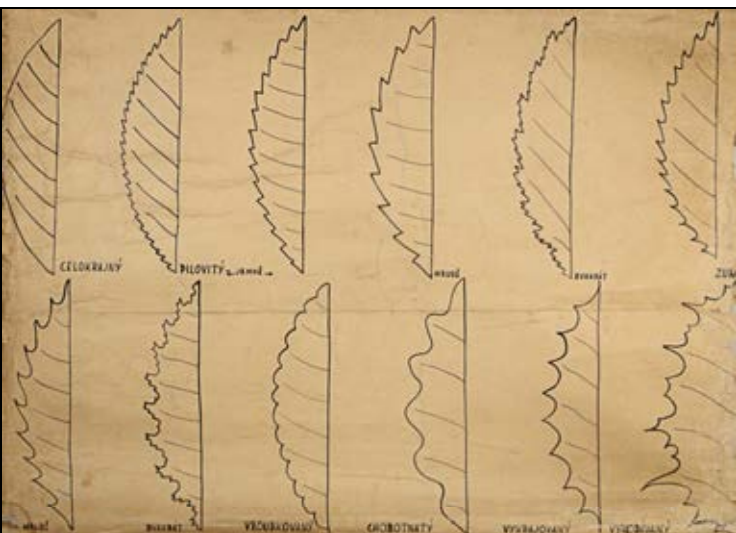
221 O - korek u Solanum tuberosum



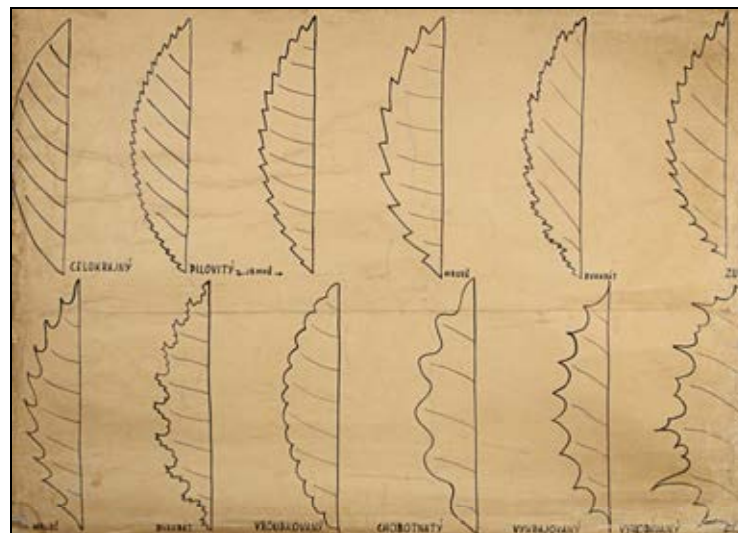
222 O - felogén - zakládání



222 O - zakládání felogénu



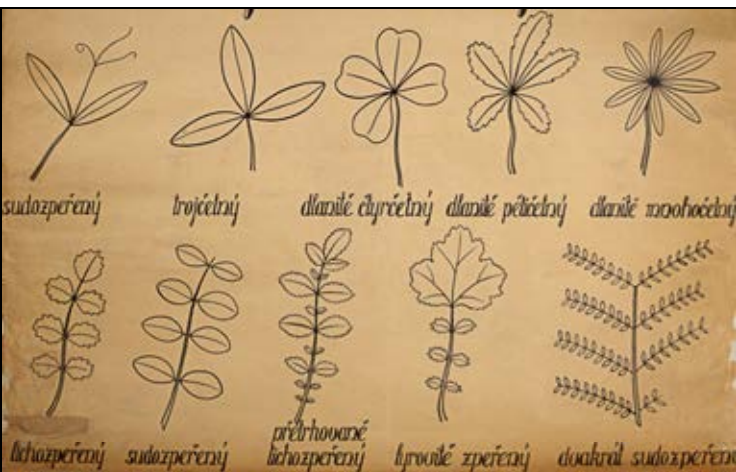
223 O - list - okraje čepele



223 O - okraje listů



224 O - list - složené čepele



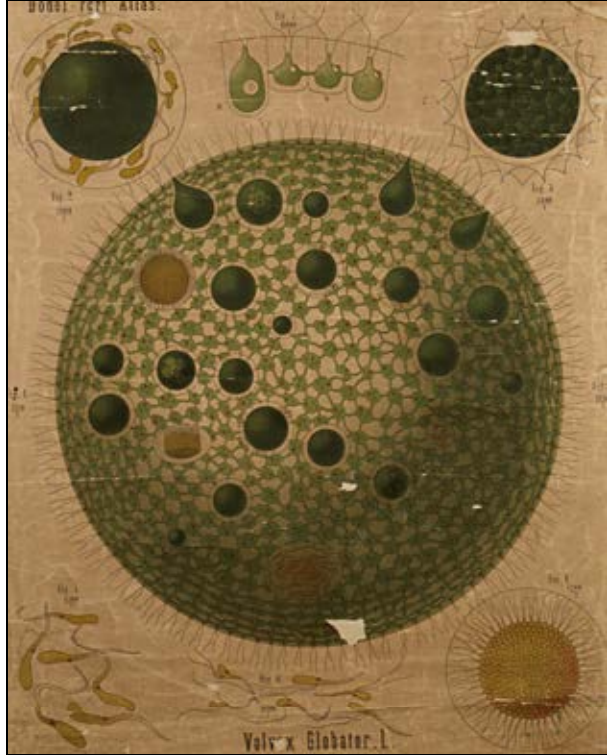
225 O - list - tvary složených



226 O - list - tvary jednoduchých II



227 O - list - formování v ontogenezi



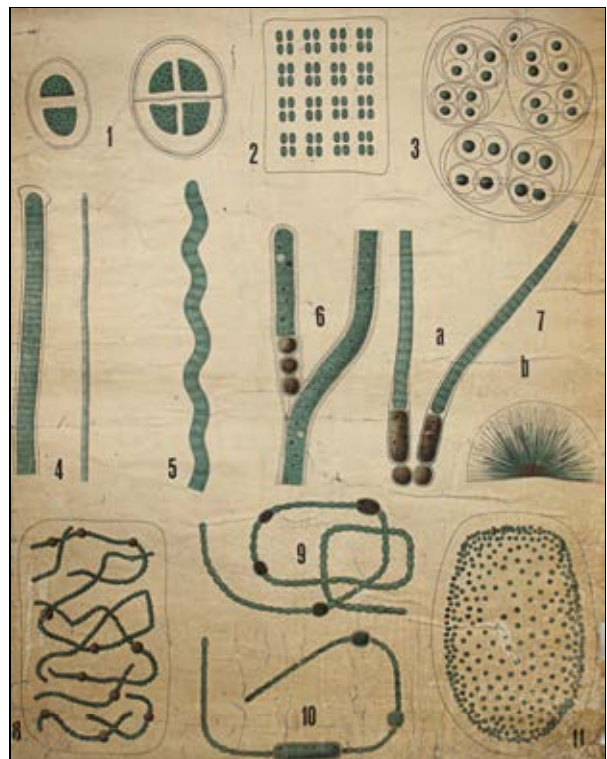
228 S - Volvox globator



229 S - Cosmarium



230 S - Rozičky



231 S - sinice



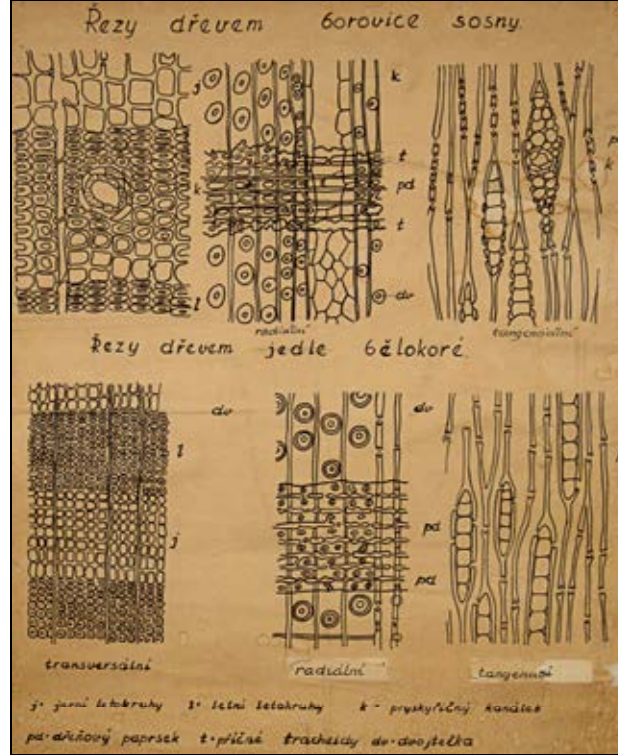
232 O - škrob - Solanum tuberosum



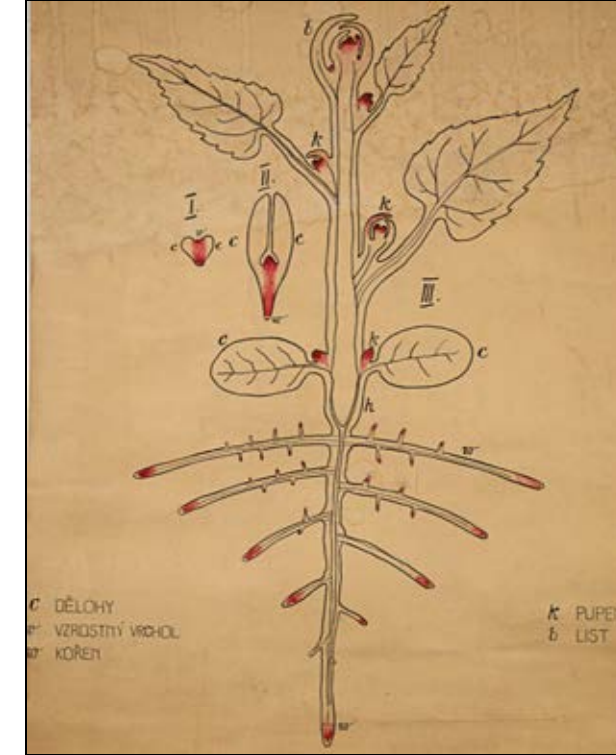
233 O - vajíčko - vývoj



234 O - plody - typy



235 O - dřevo - řezy Pinus, Abies



236 O - stonek - růstové zóny



237 O - kořen - vývoj



238 S - Larix decidua



239 S - Euphorbiaceae





240 S - Poaceae - stavba květu Secale



241 S - Caryophyllaceae - Stelaria, Cerastium, Sparganium



242 S - Brassicaceae - Raphanus, Sinapis



243 S - Asteraceae - Matricaria, Tripleurospermum



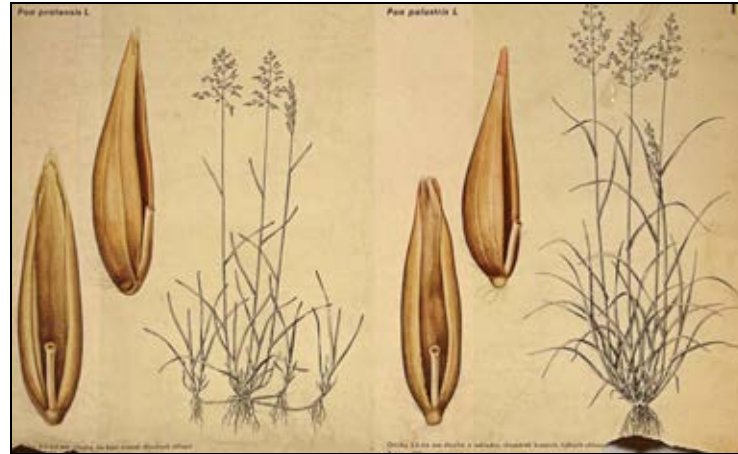
244 S - Ranunculaceae - Ranunculus repens apod



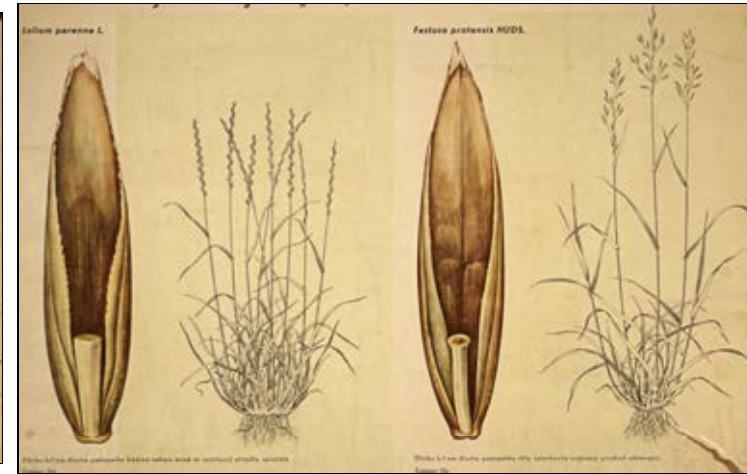
245 S - Plantaginaceae - Plantago major apod



246 S - Papaveraceae - Papaver, Chelidonium



247 S - Poaceae - Poa palustris, pratensis



248 S - Poaceae - Lolium a Festuca



249 S - Poaceae - Dactylis, Bromus



250 S - Helleborus niger



x34 S - Scrophulariaceae, Orobanchaceae, Lamiaceae



x81 S - Lilium martagon



001 S - Poaceae - Oryza, Saccharum



002 S - Palmaceae - Cocos



050 S - Rubiaceae, Theaceae - Coffea, Thea



049 S - Cucurbitaceae - Cucurbita, Brionia, Citrullus



048 S - Asteraceae - Tussilago, Echinops



047 S - Asteraceae - Cichorium, Helianthus



046 S - Orchideaceae - Cattleya, Cypripedium, Vanilla



045 S - Mimosaceae, Cesaplinaceae - Cercis, Mimosa



044 S - Malvaceae - Malva, Abutilon, Gossypium



043 S - Fabaceae - Robinia, Onobrychis



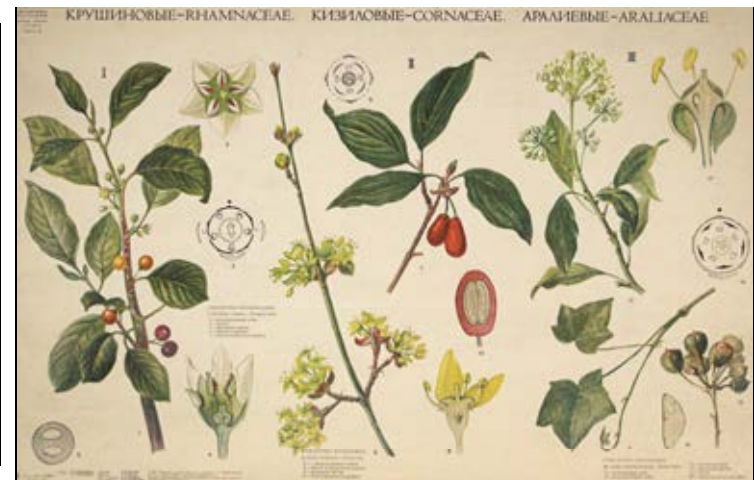
042 S - Fabaceae - Lupinus, Mellilotus, Medicago



041 S - Fabaceae - Faba, Pisum, Phaseolus



040 S - Sterculiaceae, Tiliaceae - Cacao, Tilia



039 S - Rhamnaceae, Cornaceae, Araliaceae



038 S - Apiaceae - Bupleurum, Eryngium, Hydrocotyle



037 S - Myrtaceae, Punicaceae



036 S - Brassicaceae - Sinapis, Barbarea



035 S - Papaveraceae, Fumariaceae



034 S - Ginkgo biloba, Araukaria



033 S - Pinus sylvestris



032 S - Samci a samici kvet - Pinus



031 S - Pinophyta - zástupci



030 S - Pinophyta - Juniperus, Thuja



029 S - Pinophyta - fosilie



028 S - Ephedra, Gnetum



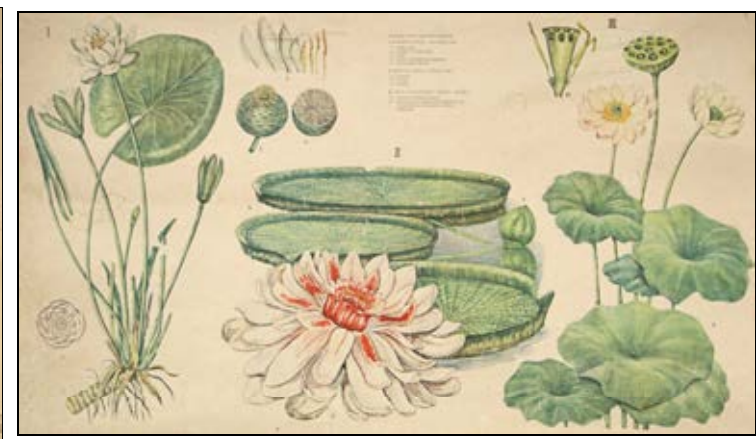
027 S - Lauraceae, Berberidaceae, Magnoliaceae



026 S - Ranunculaceae - Trollius, Clematis



025 S - Ranunculaceae - Thalictrum, Aquilegia



024 S - Nymphaeaceae



023 S - Crassulaceae, Saxifragaceae



022 S - Rosaceae - Sorbus, Malus



021 S - Rosaceae - Rosa, Fragaria, Rubus



019 S - Solanaceae - Solanum



018 S - Solanaceae - Nicotiana, Atropa

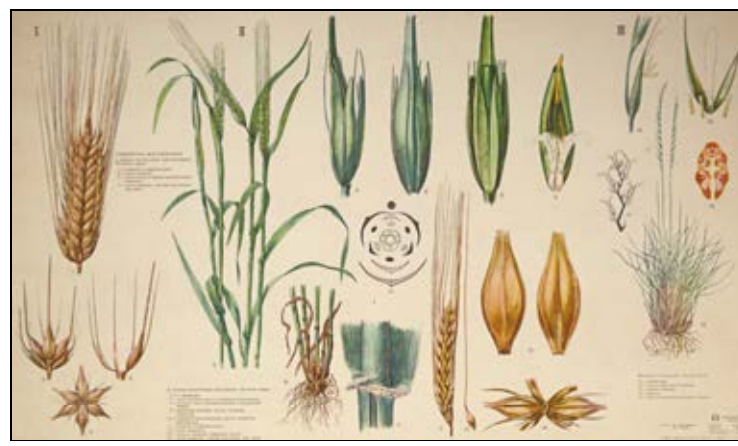


017 S - Oleaceae, Convolvulaceae





016 S - Poaceae - Panicum, Zea



015 S - Poaceae - Hordeum, Nardus



014 S - Apiaceae



013 S - Euphorbiaceae



012 S - Aesculus, Vitis vinifera



011 S - Linaceae, Geraniaceae



010 S - Rutaceae, Aceraceae - Citrus



009 S - Fagus, Betulus, Juglans



008 S - Cyperaceae, Araceae, Typhaceae



006 S - Liliaceae



005 S - Liliaceae - Aloe, Allium, Asparagus



004 S - Amaryllidaceae, Juncaceae, Iris



003 S - Musaceae, Bromeliaceae



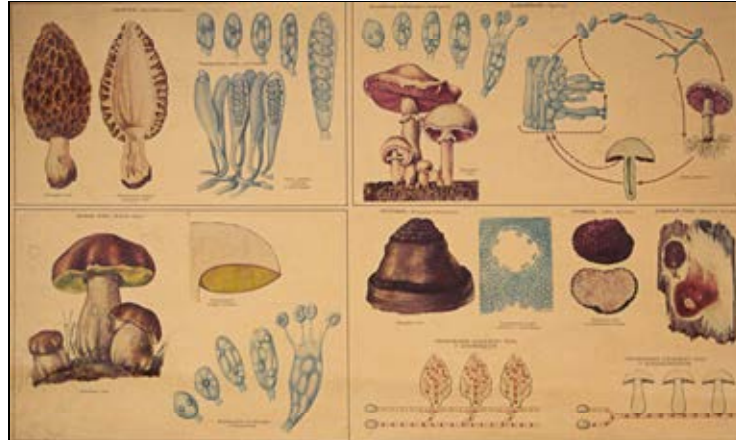
100 S - Chara, Ulothrix



099 S - Phytophthora, Plasmodiospora



098 S - Mucor, Claviceps



097 S - Basidiomycota



096 S - Puccinia graminis



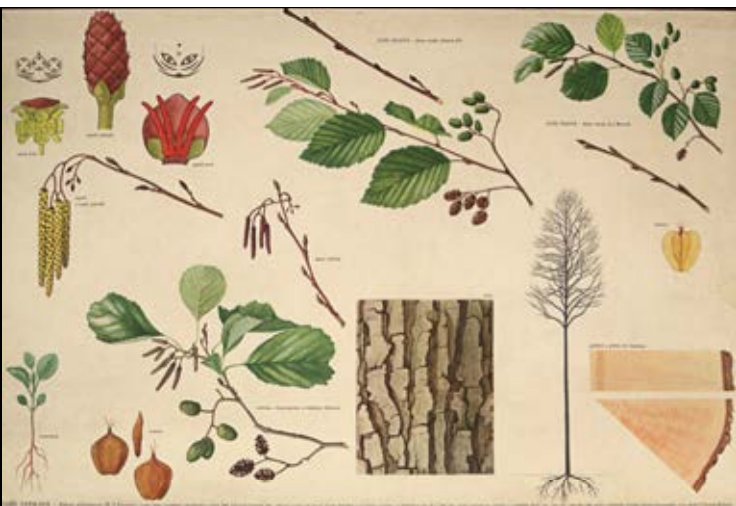
095 S - Ustilago, Tilletia



094 S - Quercus



093 S - Carpinus betulus



092 S - Alnus



091 S - Larix



089 S - Rhodophyta



088 S - Acer



087 S - Fraxinus



086 S - Sorbus



085 S - Ulmus



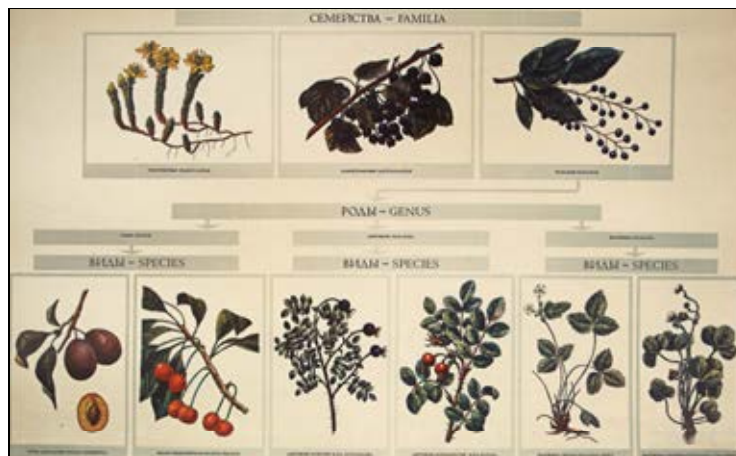
084 O - Květenství - hroznovitá



083 O - Květenství



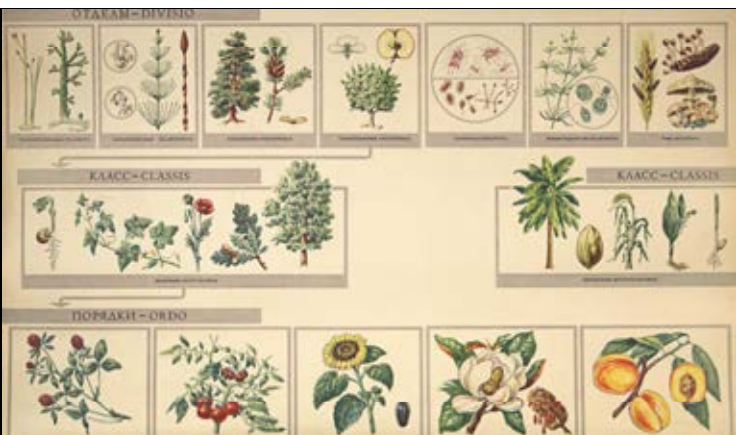
082 O - Plody - suché nepukavé



081 O - Struktura systému



080 O - Klíčení a stavba semene



079 O - Struktura systému - vyšší jednotky



078 O - Metamorfózy stonku



077 O - Metamorfózy listů



076 O - List - tvary



075 O - List - složene



074 O - Metamorfózy - na kořen



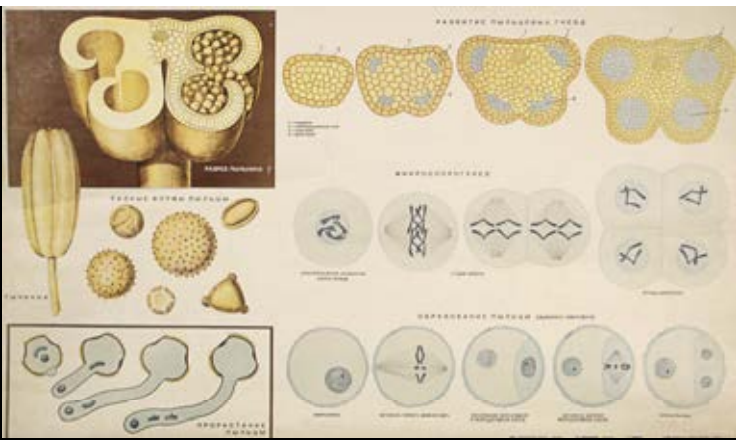
073 O - Květ - stavba



072 O - Květ - tvary koruny



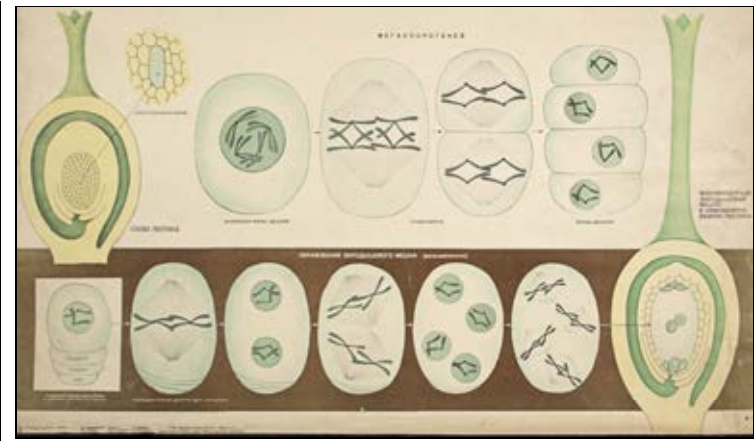
071 O - Tyčinka - pylová zrna



070 O - Tyčinka - vývoj



069 O - Gyneceum - tvary



068 O - Oplození u dvouděložných



067 S - Poaceae - Dactylis, Poa, Festuca



066 S - Poaceae - Agrostis, Phleum, Alopecurus



065 S - Poaceae - Avena, Arrhenatherum

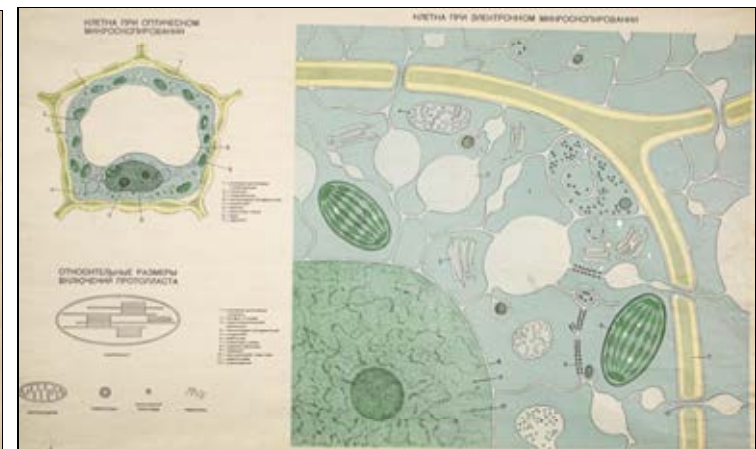




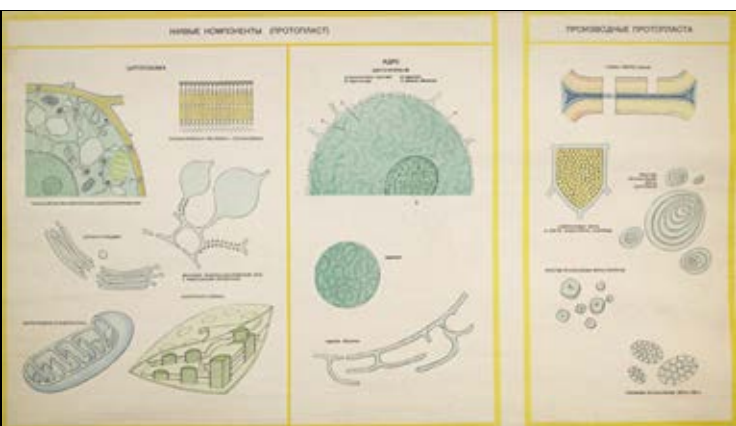
064 S - Poaceae - Triticum



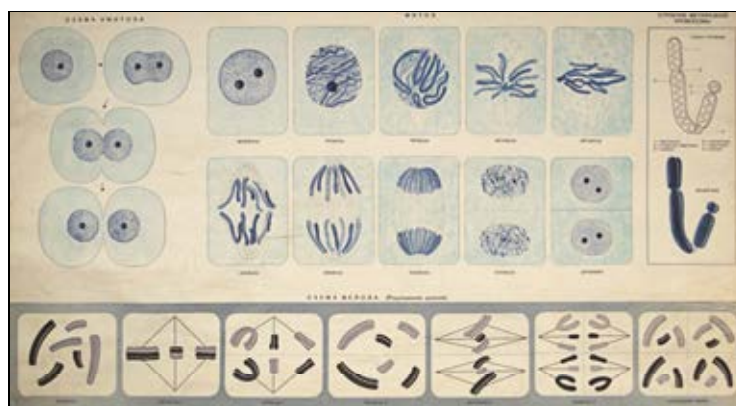
063 S - Poaceae - Agropyron, Bromus



062 O - Buňka



061 O - Buněčné organely



060 O - Mitóza



059 O - Kořen - tvary



058 O - Stonek - větvení i kořen



057 O - Stonek - tvary i pupeny



056 S - Brassicaceae - zeleniny



055 S - Chenopodiaceae, Amaranthaceae



054 S - Polygonaceae, Piperaceae



053 S - Cactaceae, Caryophyllaceae



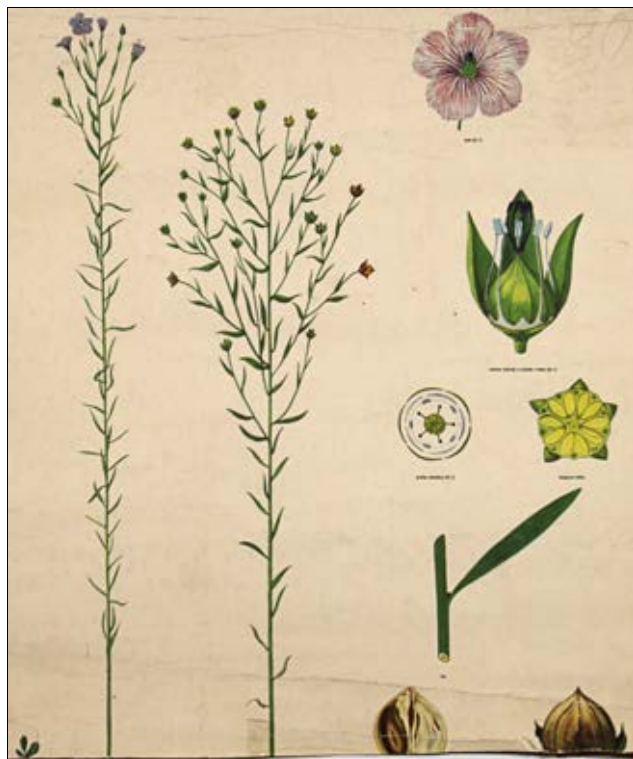
052 S - Moraceae



051 S - Urticaceae, Cannabiaceae



150 S - Solanaceae - Datura, Hyoscyamus



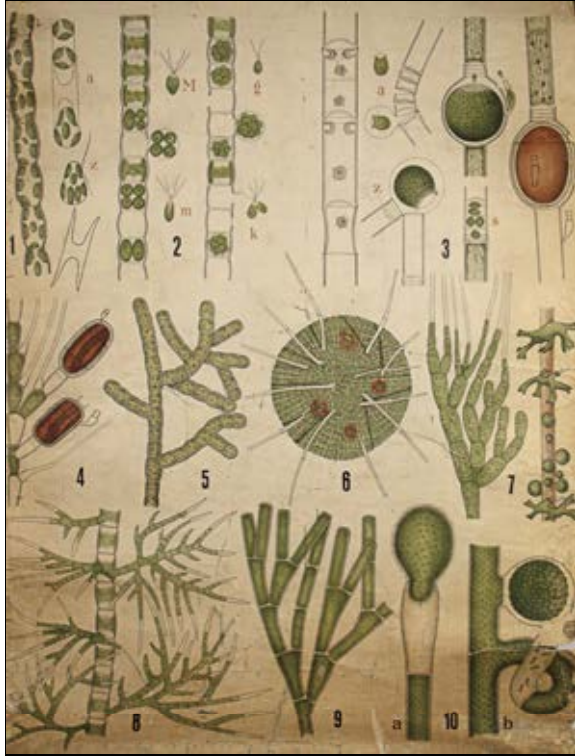
149 S - Linaceae - Linum



148 S - Cannabiaceae - Humulus lupulus



147 S - Ulothrix zonata



146 S - Algae - Chlorophyta



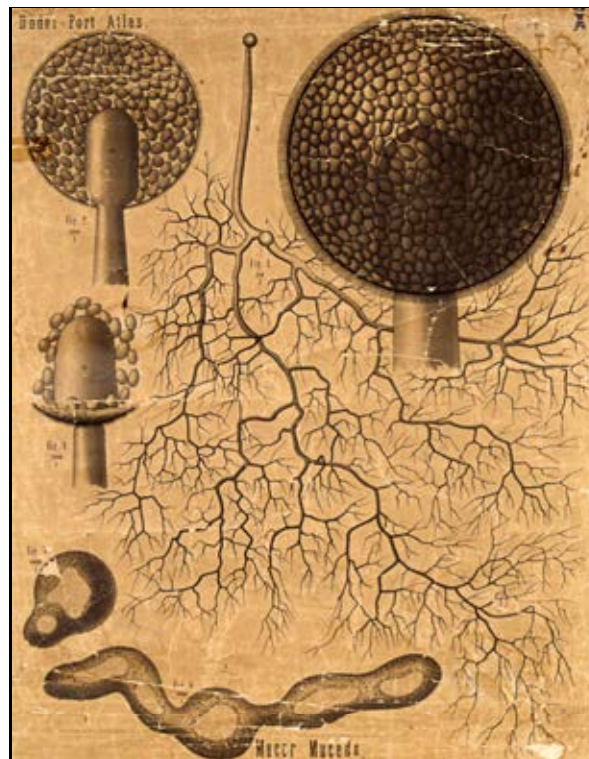
145 S - Konjugace u Spyrogiry



144 S - Euglena



143 S - Algae - Rhodophyta



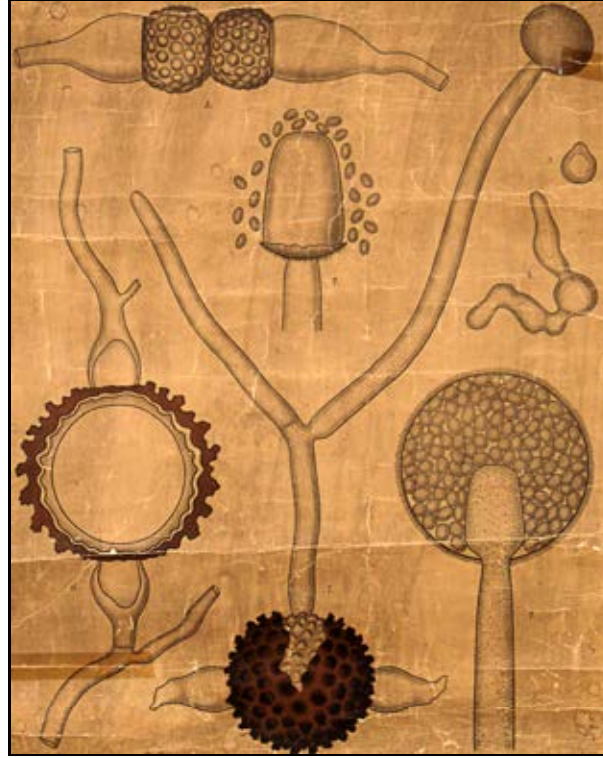
142 S - Mucor mucedo



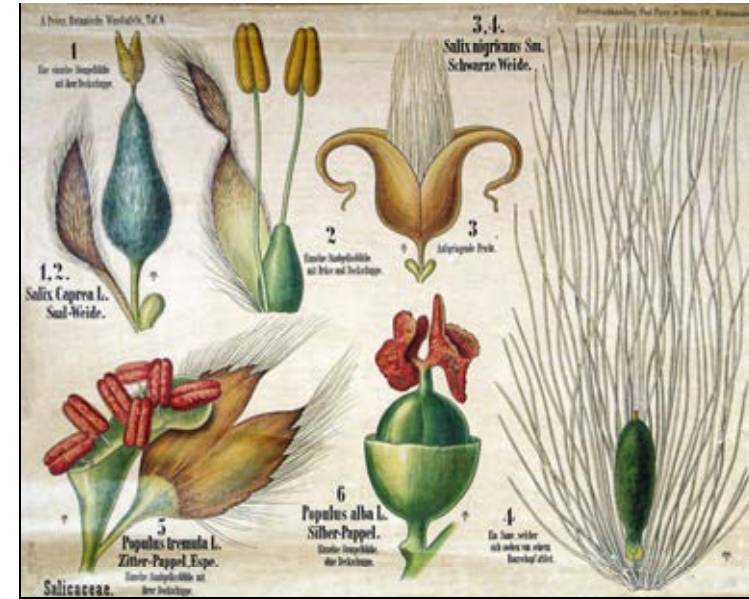
141 S - Tilletia tritici



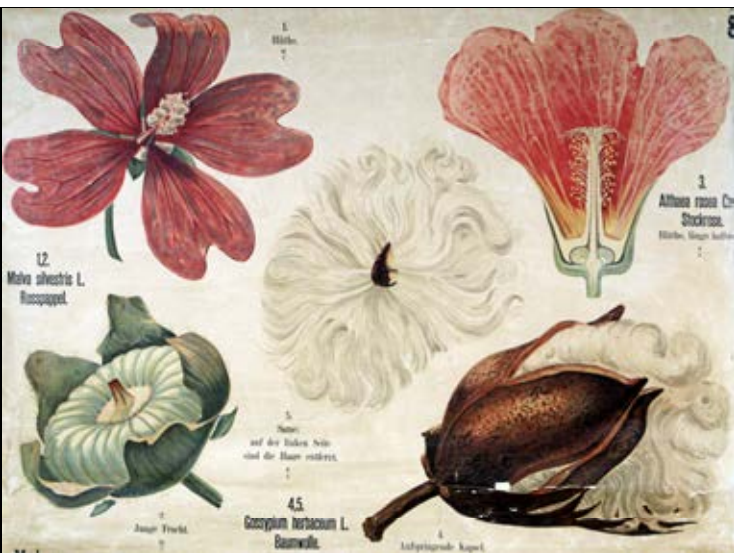
140 S - Puccinia graminis



139 S - Mucor mucedo - vývoj



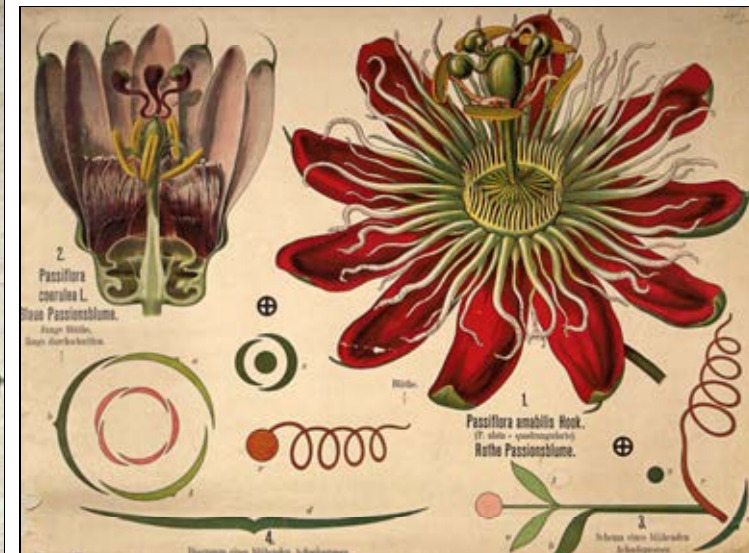
138 S - Salicaceae - květy



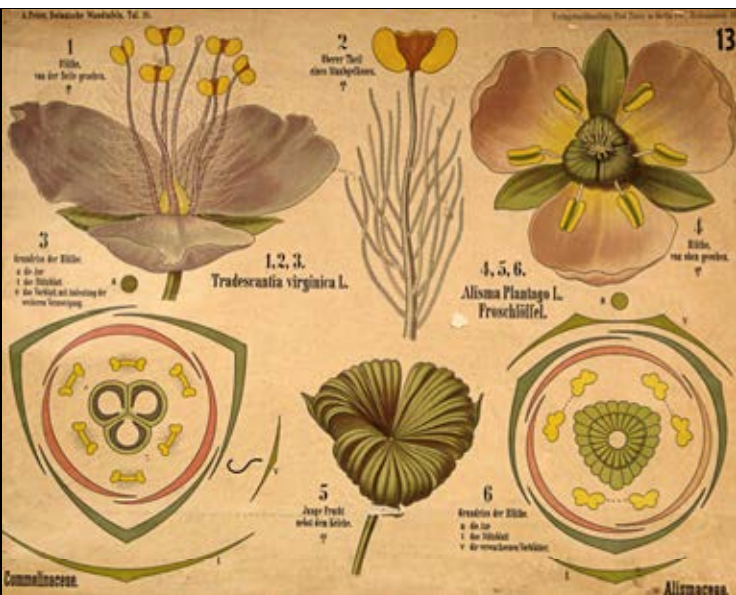
137 S - Malvaceae - Malva, Gossypium



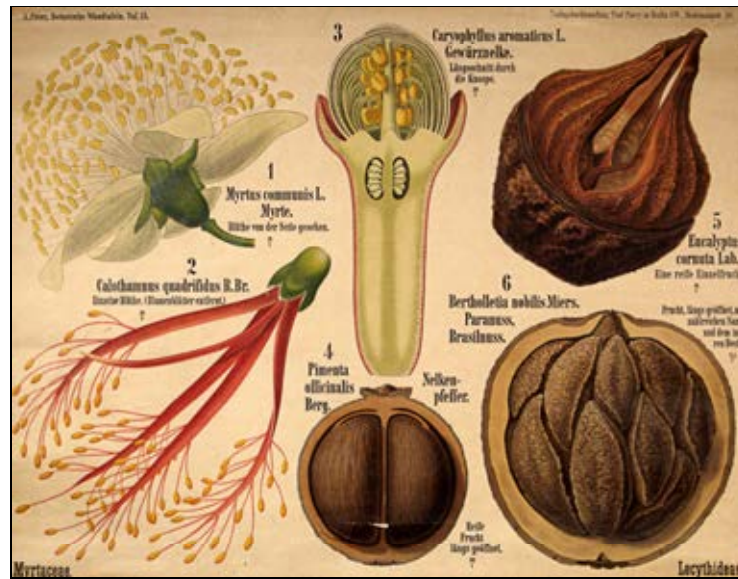
136 S - Corylus



135 S - Passifloraceae



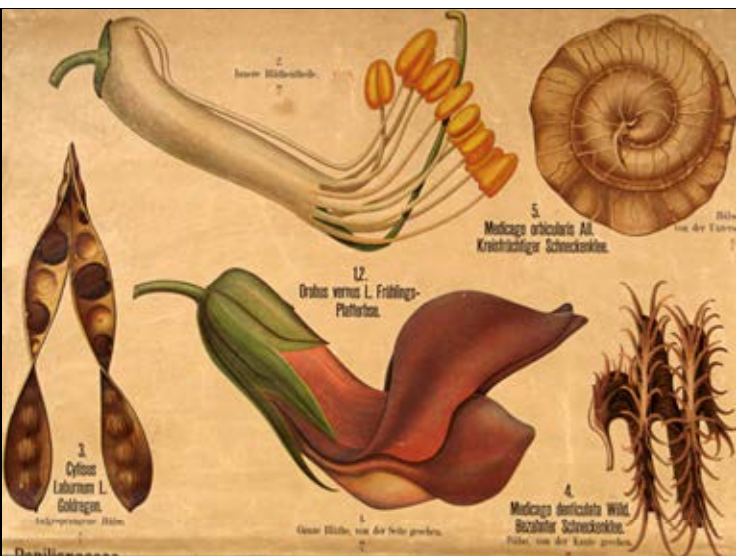
134 S - Alismaceae, Commelinaceae



133 S - Myrtaceae, Lycithideae



132 S - Orchideaceae



131 S - Fabaceae - Medicago, Laburnum



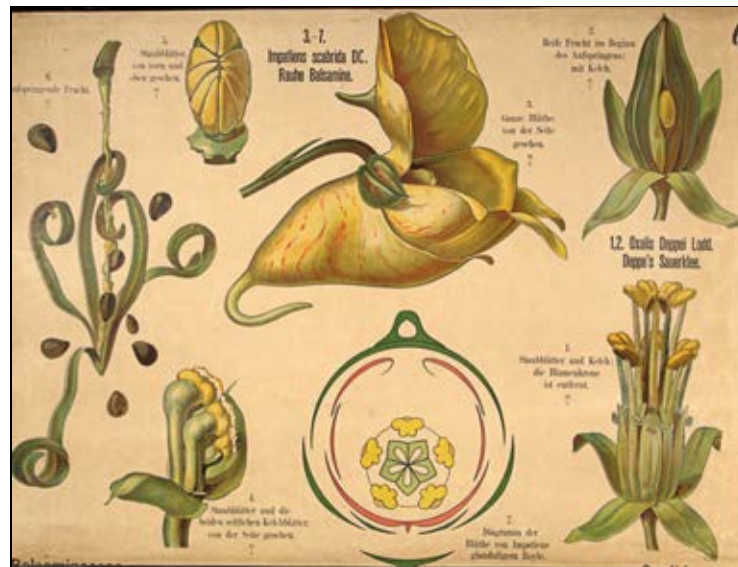
130 S - Vitaceae



129 S - Caryophyllaceae - Telephium



128 S - Solanaceae - Solanum



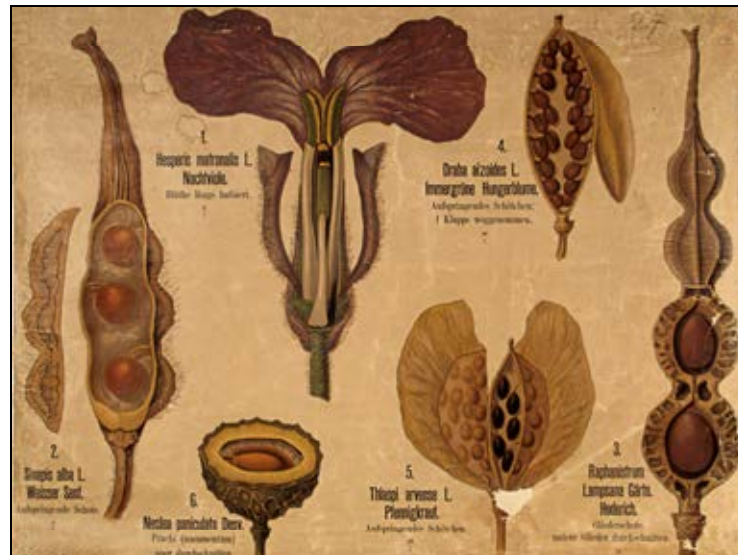
127 S - Balsaminaceae



126 S - Cichoriaceae



125 S - Campanulaceae



124 S - Brassicaceae



123 S - Vitaceae



122 S - Caryophyllaceae - květy



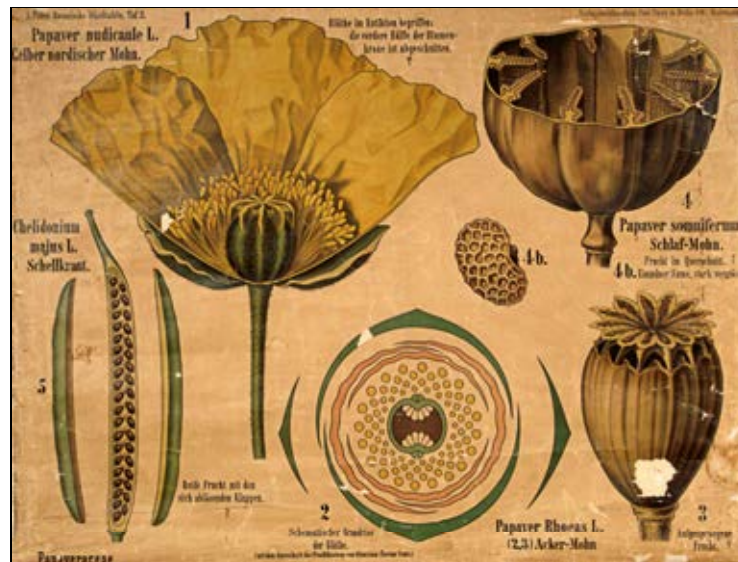
121 S - Cuscutaceae



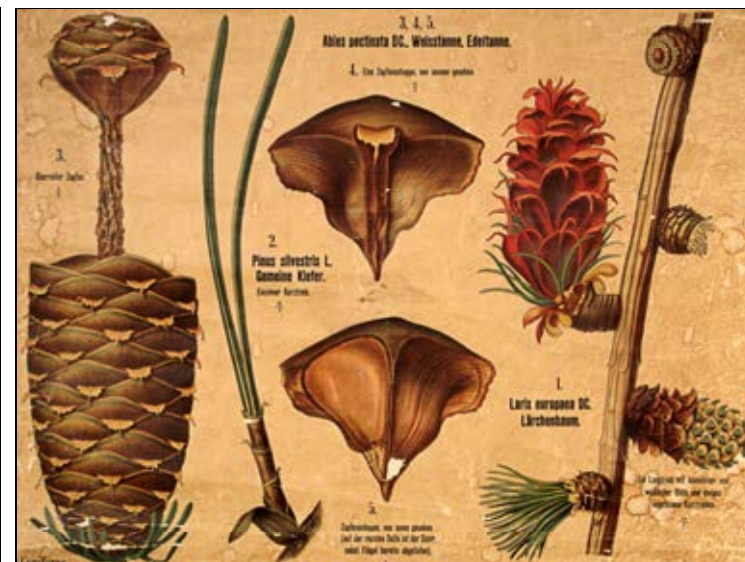
120 S - Ranunculaceae - květy



119 S - Cactaceae

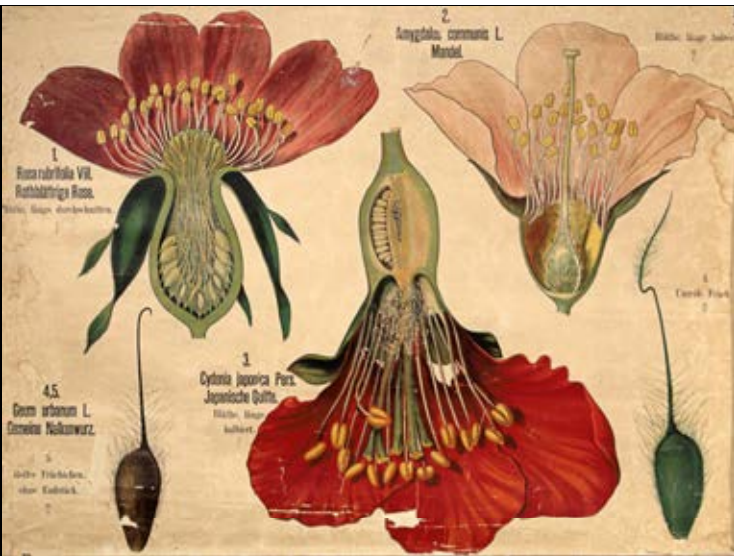


118 S - Papaveraceae

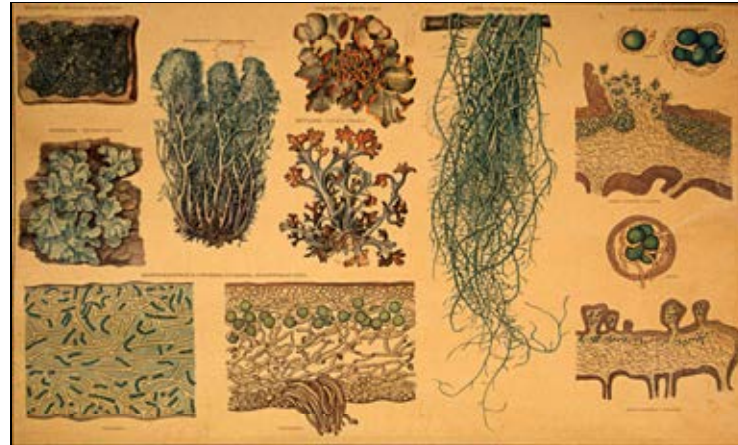


117 S - Pinaceae

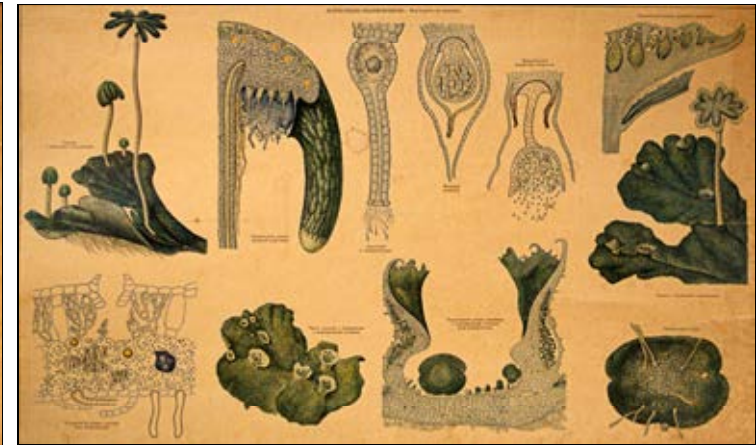




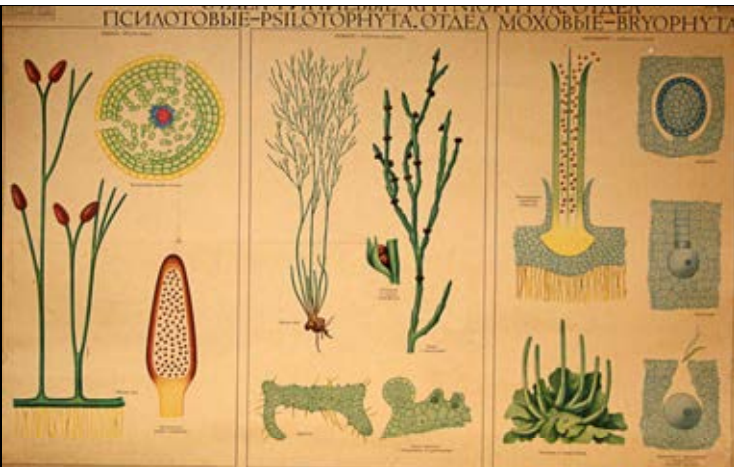
116 S - Rosaceae



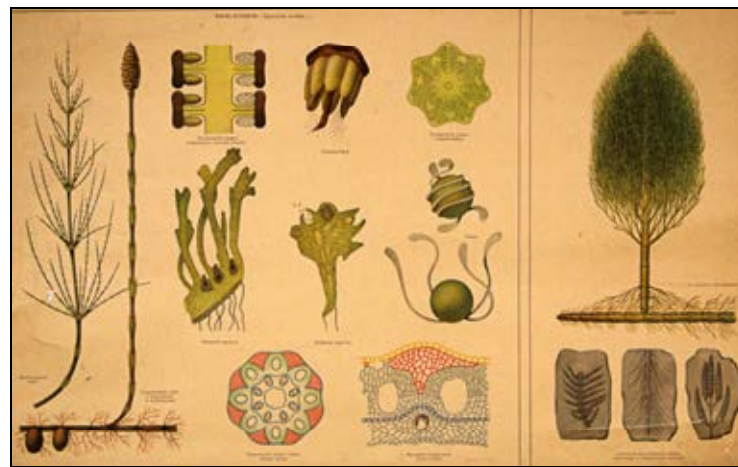
115 S - Lichenes



114 S - Bryophyta - Marchantia



113 S - Rhynie, Psilophyta



112 S - Equisetophyta



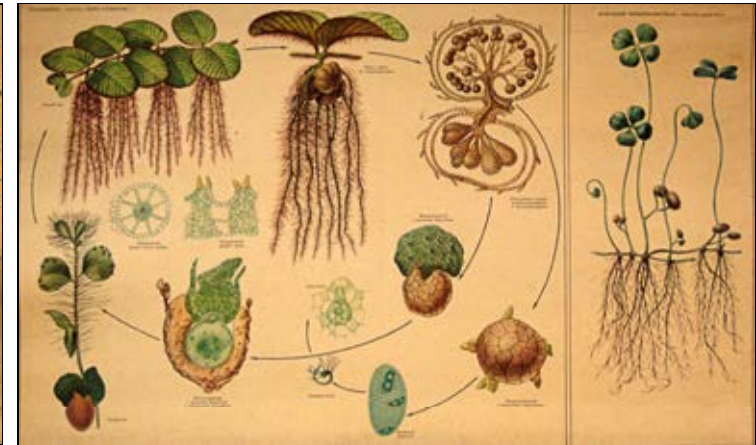
111 S - Lycopodiophyta



110 S - Bryophyta - Sphagnum



109 S - Polypodiophyta - fossilie



108 S - Polypodiophyta - Salvinia



107 S - Polypodiophyta - Dryopteris



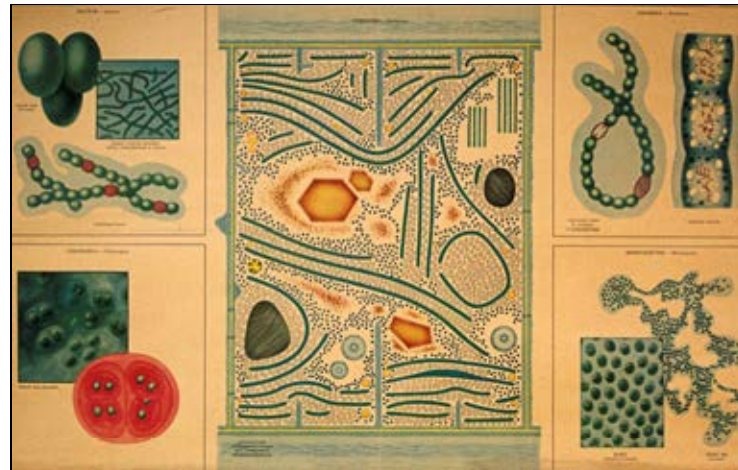
106 S - Cykas



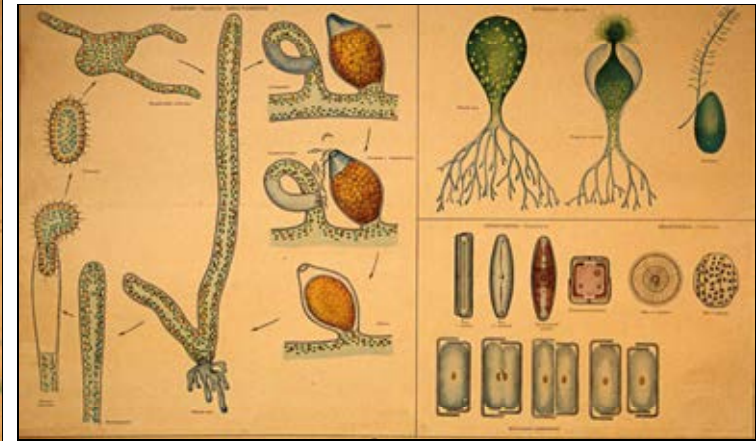
105 S - Cordaitophyta, Bennettiales



104 S - Vegetace - prvohor



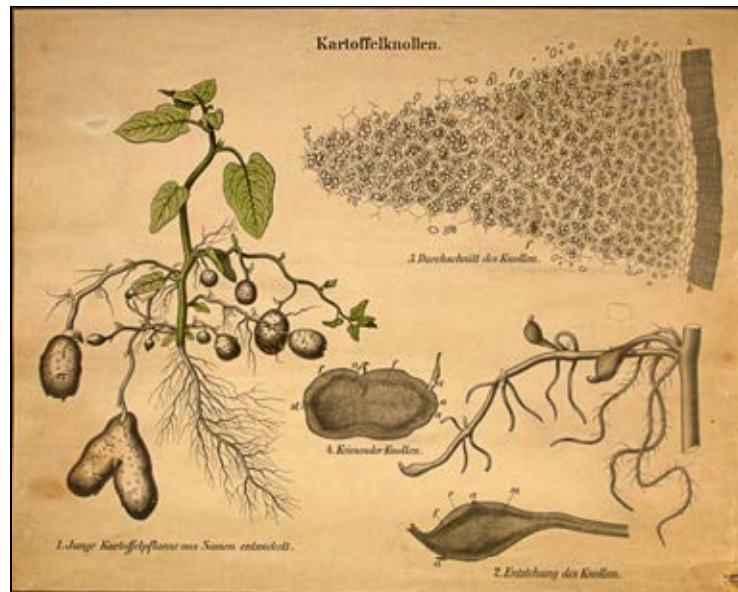
103 S - Cyanophyta



102 S - Rozsivky



101 S - Chlorophyta



191 O - Korek, škrob - Solanum tuberosum



190 S - Taxus, Juniperus



189 S - Abies alba



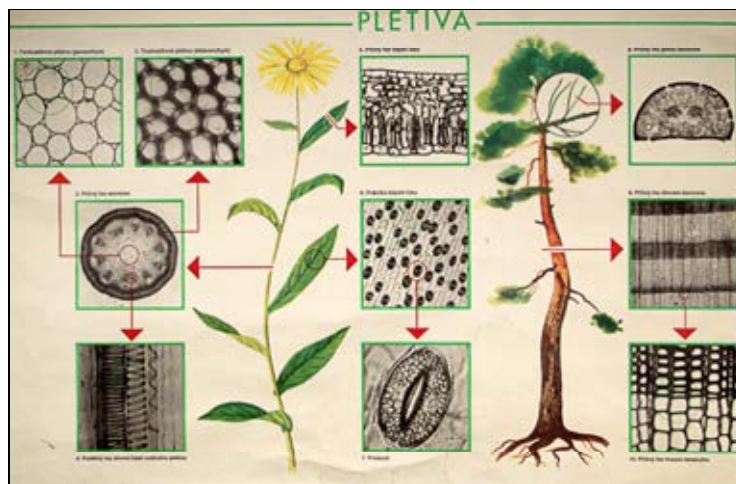
188 S - Abies alba II



187 S - Fungi - hřibovit



186 S - Fungi - hřibovit II



185 O - Pletiva



184 S - Picea abies





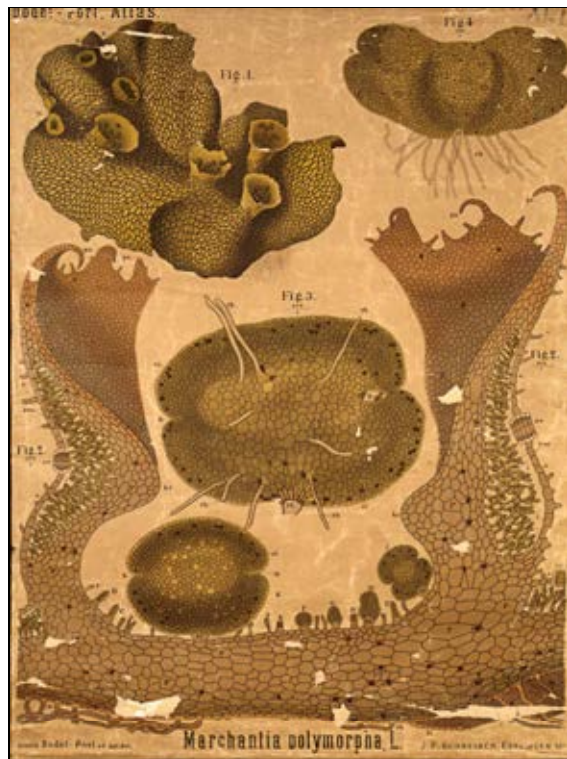
177 S - Beta vulgaris



176 S - Cydonia vulgaris



175 S - Námel



174 S - Marchantia polymorpha



173 S - Peziza



172 S - Marchantia polymorpha - samec



171 S - Hormony



170 S - Říše



169 S - Poaceae - stavba květu



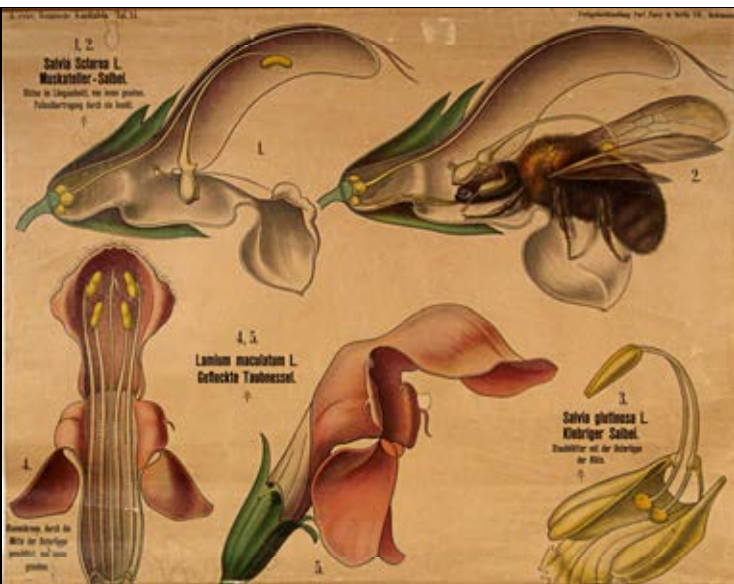
168 S - Liliaceae, Amaryllidaceae



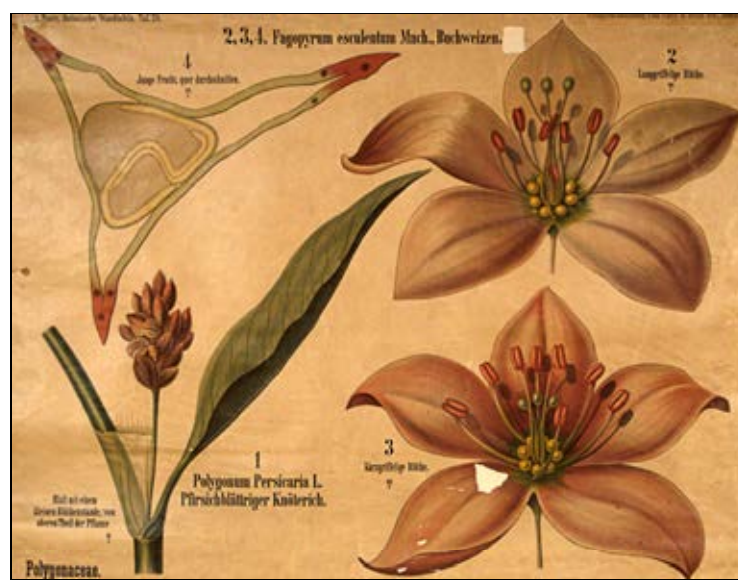
166 S - Salvia



165 S - Scrophulariaceae



164 S - Lamiaceae - květy



163 S - Polygonaceae



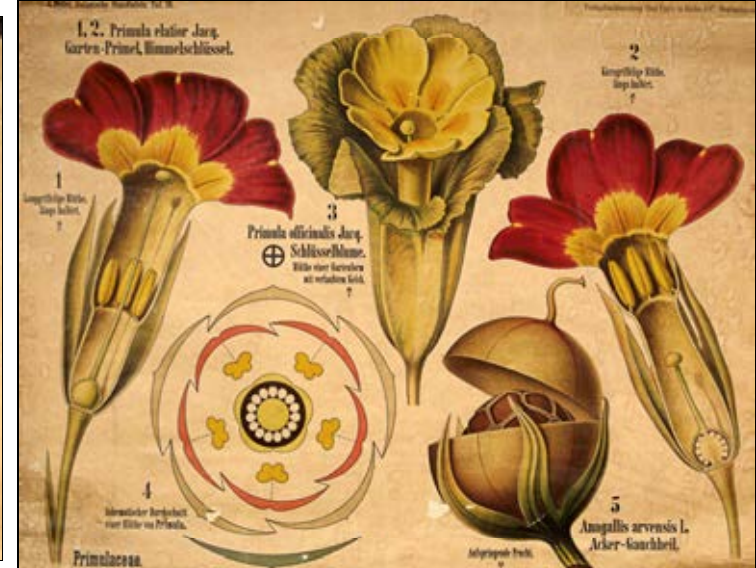
162 S - Araceae



161 S - Nymphaeaceae



160 S - Boraginaceae

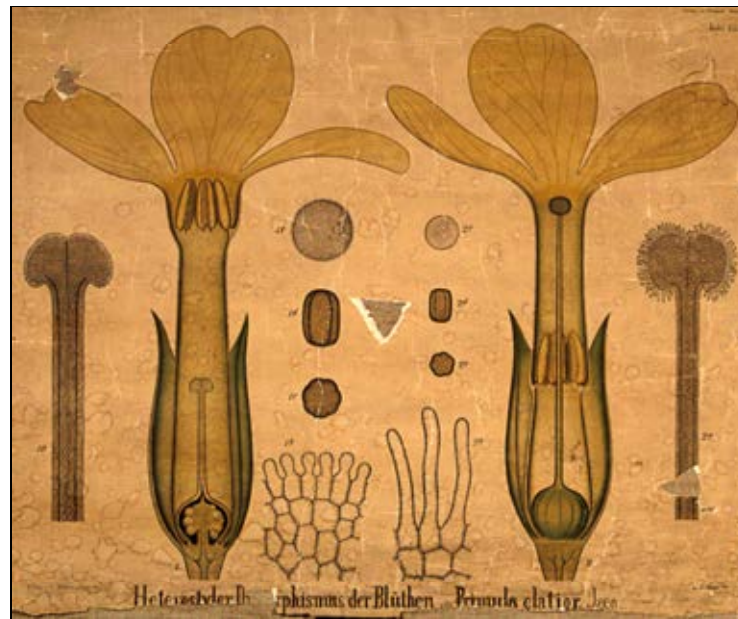


159 S - Primulaceae





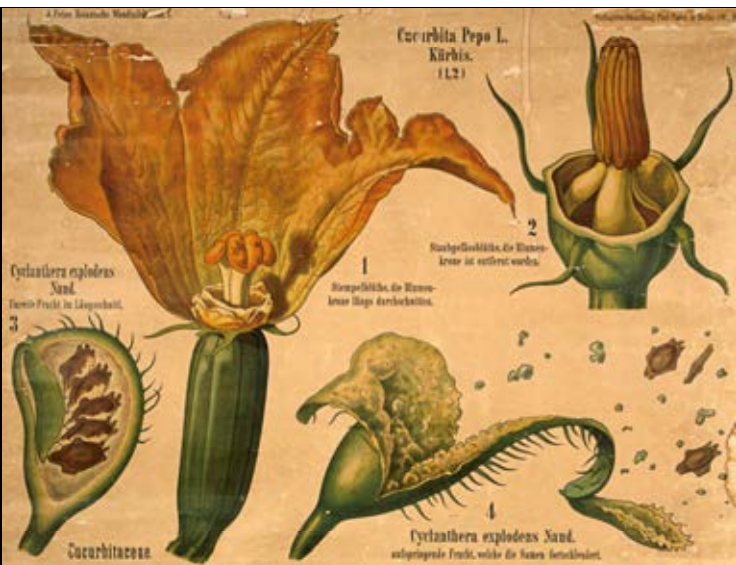
158 S - Asteraceae



157 O - Dimorfismus - Primula



156 S - Apiaceae



155 S - Cucurbitaceae



154 S - Phaseolus coccineus



153 S - Sinapis arvensis

